

# 8TSTAP

## STANDARD TRASH AUTO PRIME



**Technosub® Standard Trash Auto Prime pumps are specifically designed to effectively handle a wide range of liquids from water to sewage and sludge that can contain solids and other material.**

**Technosub Standard Trash Auto Prime pumps provide a dependable, highly efficient solution in a completely automatic priming pump.**

**The model 8TSTAP is capable of achieving maximum flows of 3400 gpm (772 m<sup>3</sup>/h) and maximum total head of 165' (50 m) while handling solids up to 4" (100 mm) in diameter.**

**The standard 8TSTAP is powered by a water-cooled, 4-cylinder diesel engine. Alternative drives are available including natural gas as well as electric motors.**

## FEATURES

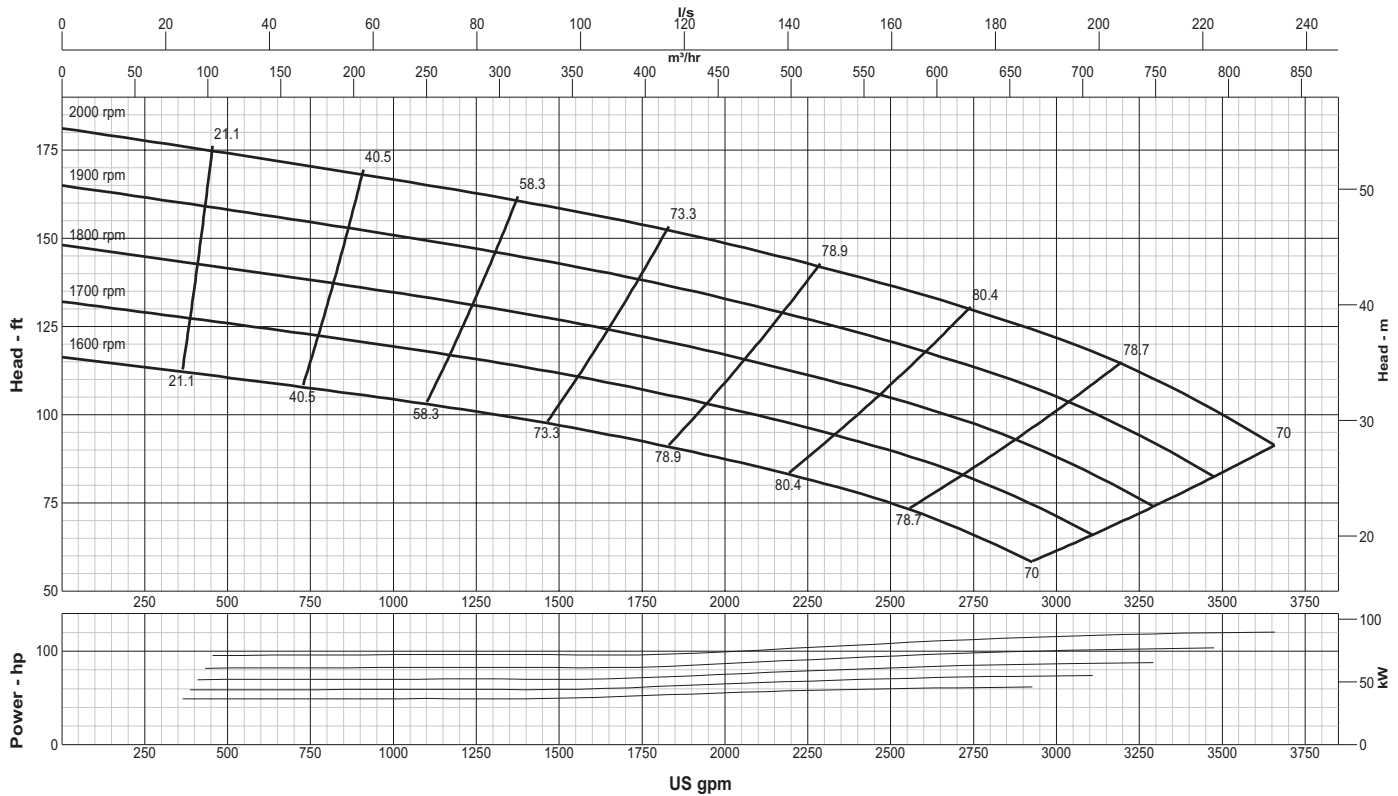
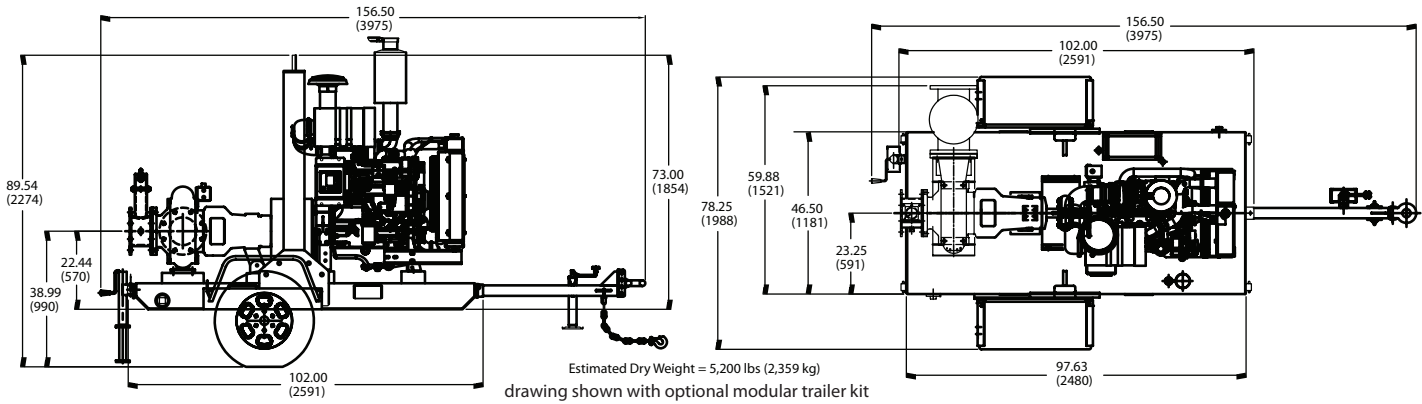
- Technosub's rugged, heavy duty pumps are engineered specifically for portable application
- Fully automatic priming system allows the pump to prime and re-prime while running
- Compressor-fed, venturi priming system provides rapid, reliable priming
- Mechanical seal with biodegradable glycol quench allows the pump to start and run dry
- Non-return valve uses only a single moving part to allow full flow with minimal restriction
- Pump casings are hydrostatically tested to 50 psig (345 kPa) above the peak casing design pressure
- Standard engine control panel provides preset emergency shutdown protection and allows the addition of automatic level control
- Skid-mounted formats with tie downs, lifting bail, and fork pockets

## OPTIONS

- Fuel tanks for extended run times and/or remote location
- Modular trailer kit
- Trailer brakes and lights
- Sound attenuated enclosure
- Hose racks, accessory containers and other custom features available
- Wide range of suction and discharge fittings including Technosub's own "QD" Quick Disconnect fittings and accessories

Various motor sizes available pending operating point

# 8TSTAP STANDARD TRASH AUTO PRIME



## SPECIFICATIONS

- **Connections:** 8" (200 mm) ANSI Flanges
- **Maximum Pump Speed:** 2000 rpm
- **Maximum Flow:** 3650 gpm (829 m<sup>3</sup>/h)
- **Maximum Head:** 183' (55.8 m)
- **Maximum Static Priming Lift:** 28' (8.5 m)
- **Water Temperature Limit:** 160° F (70° C)
- **Solids Handling Capability:** 4" (101.6 mm)
- **Maximum Casing Pressure:** 125 psig (862 kPa)
- **Fuel Cell:** 115 gallons (435 liters)
- **Dry Weight:** 5100 lbs
- **HP:** May vary, contact Sales Representative.

## PUMP MATERIALS

- **Casing:** Cast Iron (CD4MCu is an option)
- **Impeller:** Cast Iron (CD4MCu is an option)
- **Bearing Housing:** Cast Iron
- **Bearing Lubrication:** Grease
- **Shaft/Shaft sleeve:** Steel/Stainless Steel
- **Seal:** Silicon Carbide on Silicon Carbide
- **Chassis/Fuel Cell:** Steel
- **Non-Return Valve:** Nitrile Fitted Cast Iron

Specifications and illustrations are subject to revision without notice. Technosub is not liable for any consequential, incidental or indirect damages relating to these specifications.

1 819 797-3300

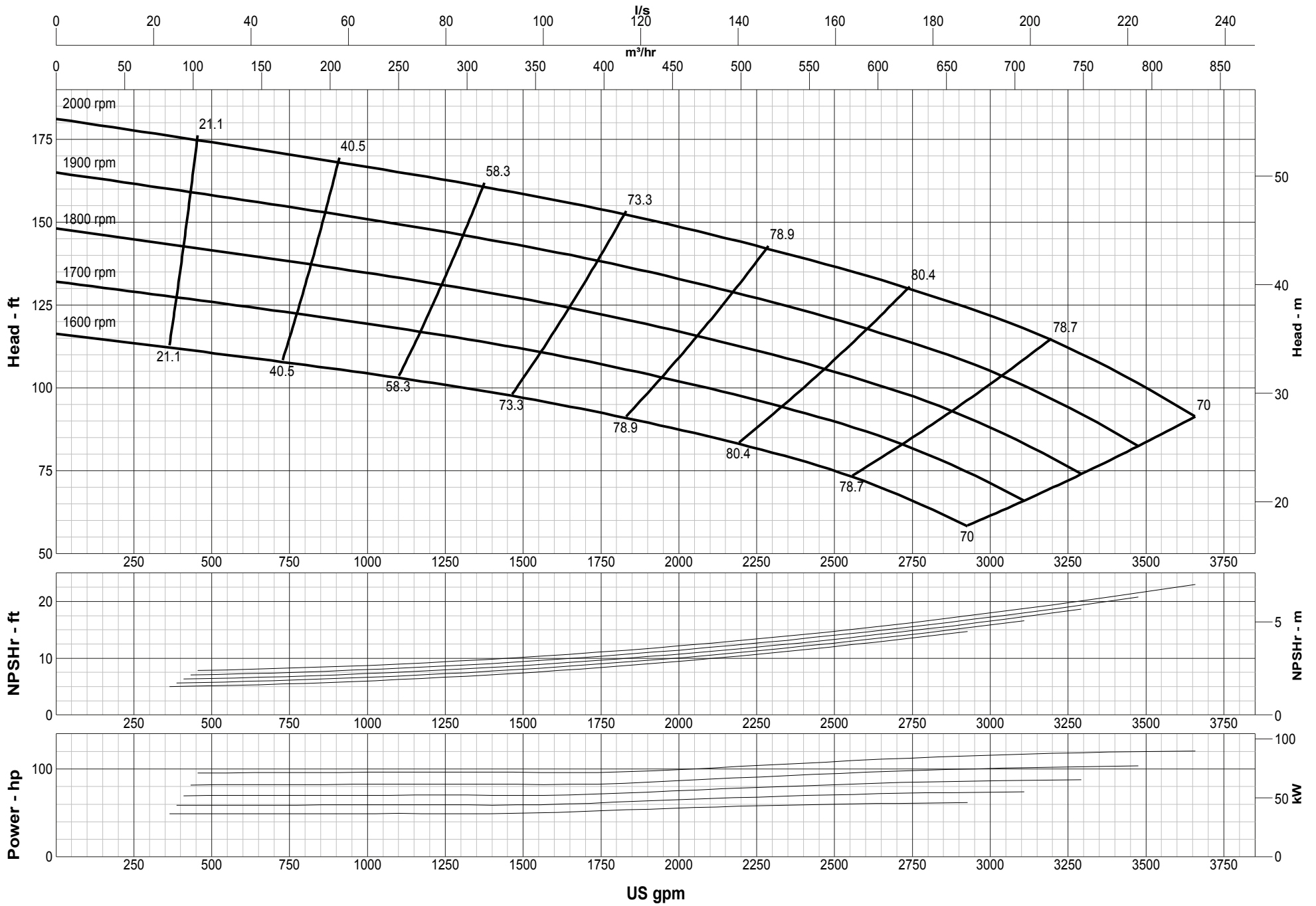
[TECHNOSUB.NET](http://TECHNOSUB.NET)

1156 Larivière avenue, Rouyn-Noranda QC Canada J9X 4K8

T 819 797-3300 F 819 797-3060 [info@technosub.net](mailto:info@technosub.net)

**Technosub**

INDUSTRIAL PUMPS  
DEWATERING SOLUTIONS



## SPECIFICATIONS

Model size : 8TSTAP  
 Speed : 1600 - 2000 rpm  
 Dia : 12 in



1 819 797-3300  
 TECHNOSUB.NET  
 info@technosub.net