

12NNT

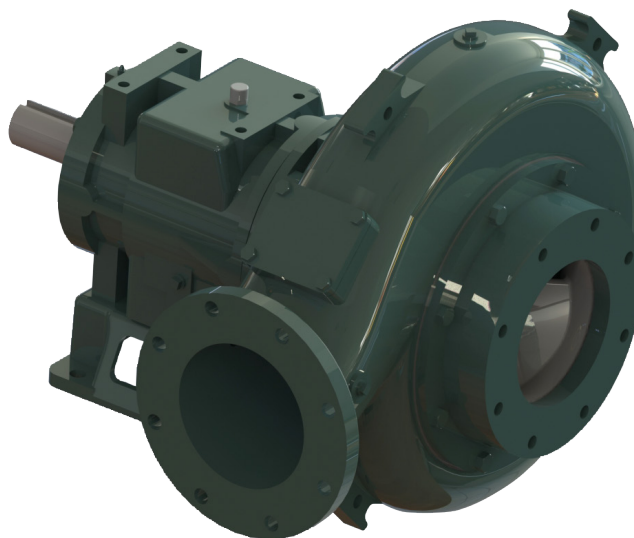


AVAILABLE MOUNTING CONFIGURATIONS

- 12NNT-F FRAME MOUNT
- 12NNT-RP-F REDI-PRIME FRAME MOUNT
- 12NNT-EM ENGINE MOUNT
- 12NNT-RP-EM REDI-PRIME ENGINE MOUNT
- 12NNT-VF VERTICAL FRAME MOUNT
- 12NNT-VC VERTICAL COUPLED
- 12NNT-HS HYDRAULIC SUBMERSIBLE

OPERATING LEVELS

| | | |
|------------------------|----------|--------------------------|
| MIN FLOW | 1500 GPM | 340.7 m ³ /h |
| MAX FLOW | 6300 GPM | 1430.9 m ³ /h |
| DISCHARGE SIZE | 12" | 304.8 mm |
| SUCTION SIZE | 10" | 254 mm |
| SOLIDS HANDLING | 4" | 101.6 mm |
| MAX SPEED | 1900 RPM | 1900 RPM |
| SHUT-OFF HEAD | 225' | 68.6 m |
| BEP HEAD | 127' | 38.7 m |
| BEP FLOW | 5000 GPM | 1135.6 m ³ /h |
| BEP PERCENT | 80% | 80% |



A typical picture of the pump is shown. Please contact Cornell Pump Company for further details. All information is approximate and for general guidance only.

| PARTS | STANDARD MATERIAL (ALL IRON) |
|------------------------|--------------------------------------|
| WEAR RING | CAST IRON |
| IMPELLER | CAST IRON |
| VOLUTE | DUCTILE IRON |
| SHAFT | 17-4PH STAINLESS STEEL |
| SHAFT SLEEVE | 416 SS |
| SUCTION COVER | CAST IRON |
| MECHANICAL SEAL | TUNGSTEN CARBIDE VS. SILICON CARBIDE |
| BEARING FRAME | CAST IRON |

The 12NNT pump is designed with Cornell's renowned quality and durability. It features a 12" discharge, 10" suction, and enclosed impeller. Cornell's patented Cycloseal[®] design is standard, with a Type 2 single mechanical seal with Buna-N elastomers, stainless steel hardware and tungsten carbide vs. silicon carbide seal faces for abrasion resistance.

- Enclosed impeller capable of passing 4" spherical solids
- Heavy-duty bearing frame
- Patented Cycloseal design
- Heavy duty construction
- RunDry™ option (Indefinite run dry capability)
- Redi-Prime[®] available for fully-automatic continuous priming



AGRICULTURE



FOOD



INDUSTRIAL



MINING



MUNICIPAL



OIL & GAS



REFRIGERATION



RENTAL

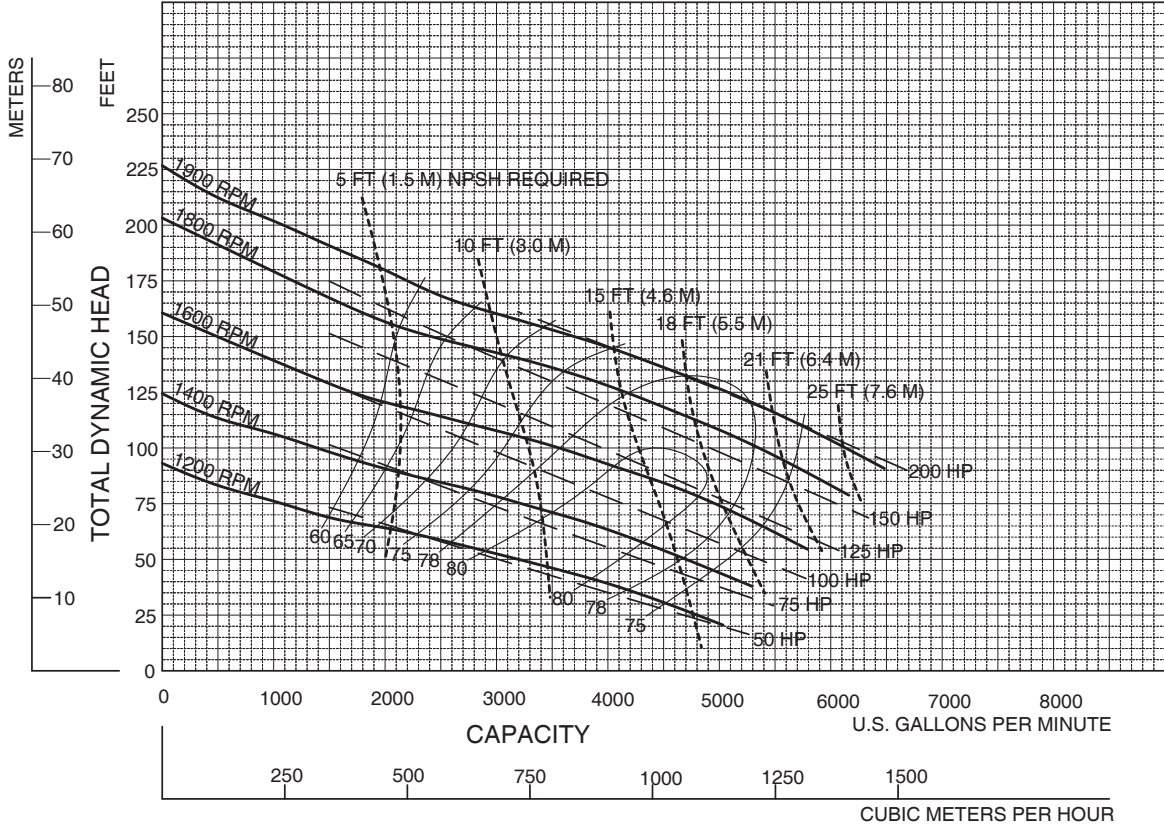
12NNT



| Speed | Impeller Dia. | Style | Solids Dia. | N _S | Suction | Discharge | No. vanes |
|---------|---------------|----------|-------------|----------------|---------|-----------|-----------|
| VARIOUS | 14" @ 0° | ENCLOSED | 4.00" | 3540 | 10" | 12" | 2 |

Feet x .305 = Meters
 Inches x 25.4 = Millimeters
 GPM x .227 = Cubic Meters/Hour
 GPM x 3.785 = Liters/Minute
 HP x .746 = KW

SINGLE VOLUTE MOUNTING CONFIG.: CC, VM, F, VF, EM, VC



Performances shown are for cool water, close-coupled electric configuration with Cyclo Seal®. Other mounting styles or liquids may require horsepower and/or performance adjustments.

4/22/08



Cornell Pump Company • Portland, Oregon

12NNT - VARIOUS RPM

NEW PAGE

12NNTVA