

14NHG34-F

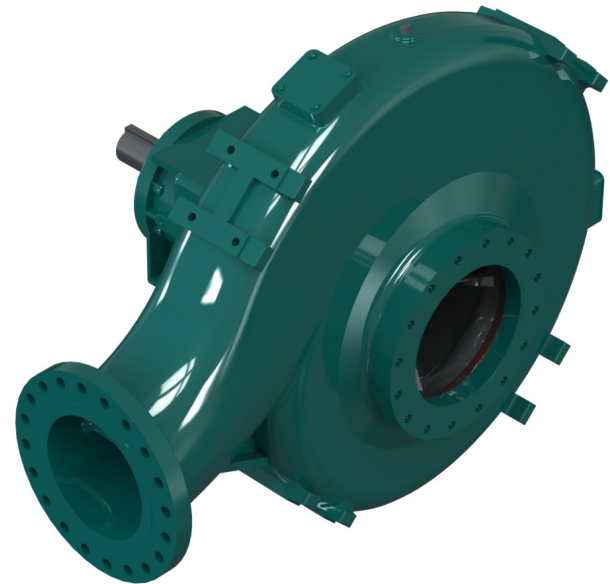


AVAILABLE MOUNTING CONFIGURATIONS

14NHG34-F FRAME MOUNT
 14NHG34-RP-F REDI-PRIME FRAME MOUNT
 14NHG34-VF VERTICAL MOUNT

OPERATING LEVELS

MIN FLOW	2200 GPM	500 m ³ /h
MAX FLOW	18000 GPM	4088 m ³ /h
DISCHARGE SIZE	14"	356 mm
SUCTION SIZE	16"	406 mm
SOLIDS HANDLING	4.25"	10.8 mm
MAX SPEED	1200 RPM	1200 RPM
SHUT-OFF HEAD	660'	201 m
BEP HEAD	485'	148 m
BEP FLOW	14060 GPM	3193m ³ /h
BEP PERCENT	84%	84%



A typical picture of the pump is shown. Please contact Cornell Pump Company for further details. All information is approximate and for general guidance only.

The 14NHG34 pump is designed with Cornell's renowned quality and durability. It features a 14" discharge, 16" suction, double volute, and enclosed impeller. Cornell's patented Cycloseal® design is standard, with a Type 2 single mechanical seal with Buna-N elastomers, stainless steel hardware and tungsten carbide vs. silicon carbide seal faces for abrasion resistance.

- Robust solids handling capability
- Premium hydraulic efficiency
- Cycloseal® design mechanical seal
- Heavy-duty construction
- RunDry™ option
- Redi-Prime® fully automatic self-priming; dry-priming available
- Double volute

PARTS	STANDARD MATERIAL (ALL IRON)
WEAR RING	CAST IRON
IMPELLER	DUCTILE IRON
VOLUTE	DUCTILE IRON
VOLUTE CASING	DUCTILE IRON
SHAFT	17-4PH
SHAFT SLEEVE	416SS
SUCTION COVER	DUCTILE IRON
MECHANICAL SEAL	TUNGSTEN CARBIDE VS. SILICON CARBIDE
BEARING HOUSING	CAST IRON
BEARING FRAME	CAST IRON
FRAME	CAST IRON



AGRICULTURE



FOOD



INDUSTRIAL



MINING



MUNICIPAL



OIL & GAS



REFRIGERATION

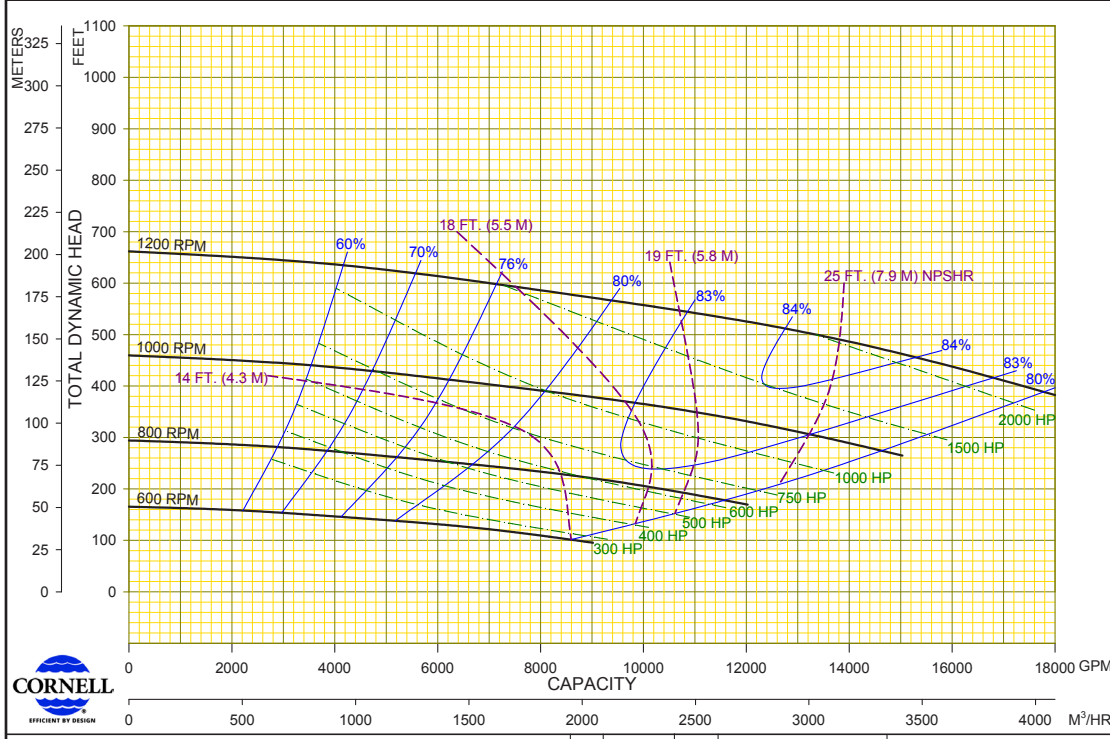


RENTAL

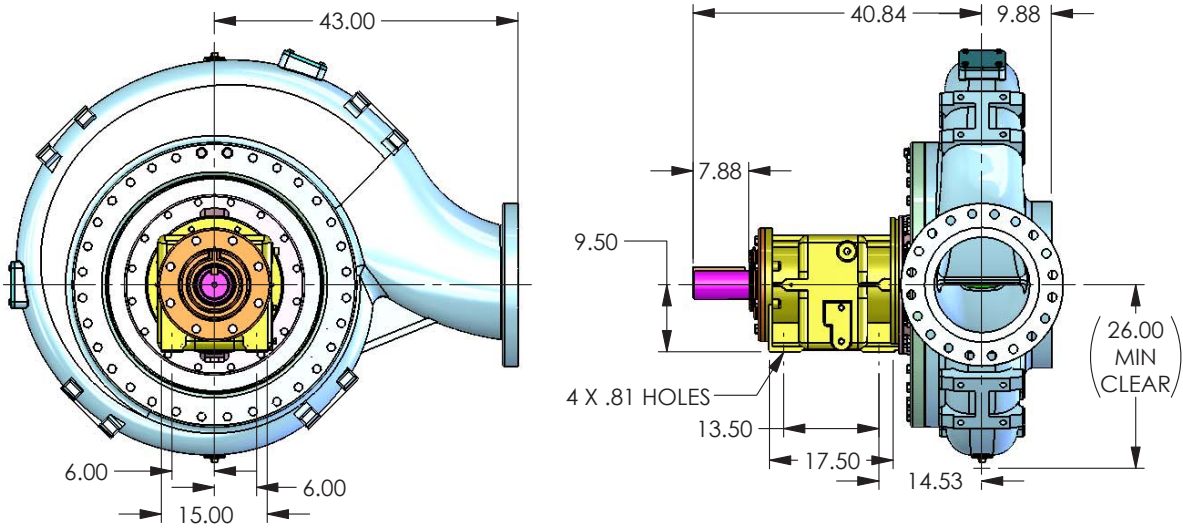
14NHG34-F



Speed	Impeller Dia.	Style	Volute	Solids Dia.	N _s	Suction	Discharge	No. Vanes
VARIOUS	34.00"	ENCLOSED	DOUBLE	4.25"	1375	16"	14"	3



Cornell Pump Company • Clackamas, Oregon	00 10/03/14	CTG	MODEL: 14NHG34	CURVE NO:
	00 10/03/14	CTG	TYPE: SOLIDS HANDLING	14NHG34VA



DS084-0001-GE