

**CORNELL PUMP COMPANY****200 - 1000 GPM Model 4NLHM 20 - 120 Feet TDH****STANDARD SPECIFICATION**

Discharge - 4 inch discharge

Suction - 4 inch suction

Impeller - Semi-open, 3 vane: handles 2.63" solids

Volute - Right and left hand tangential discharge, eight positions (twelve positions for F18, VF18, VC18 and engine mount pumps)

Mechanical Seal or Traditional Packing - Single type 2 tungsten silicon mechanical seal: Cycloseal® design, Run-Dry™ available

Materials of Construction

- Cast iron casing, cast iron impeller
- Other materials available

MOUNTING OPTIONS

• **Horizontal Close-Coupled**

Cornell VM

• **Vertical Close-Coupled**

Cornell VM

• **Frame Mount**

Cornell F5

• **Engine Bracket**

Cornell EM5 (SAE 1, 2, 3, 4)

• **Oil Filled Bearing Frame**

- Available

• **Redi-Prime® Self Priming System**

- Available

AVAILABILITY

• **Quick Ship**

- Finished Product Regularly Stocked
(48 Hours)

• **Preferred Pump**

- Finished Components Regularly Stocked
(10 business days)

• **Specialty Pump**

- Cornell Pump Company will design and manufacture a variation of this pump specifically designed for your application

**FEATURES & BENEFITS**

• **Cornell's Tradition of Excellence:**

- **Highest quality products**
- **Experience**
 - Over 50 years in the centrifugal pump business

• **Optimum Hydraulics**

- In house engineering staff and test lab facilities

• **Strong Local Dealer Support**

- Our agricultural products are sold only through authorized dealerships
- Dealerships provide full service to customers from sales to replacement parts
- Dealers maintain and improve their knowledge at educational activities like Cornell's "Pump School"

• **Exceptional Design:**

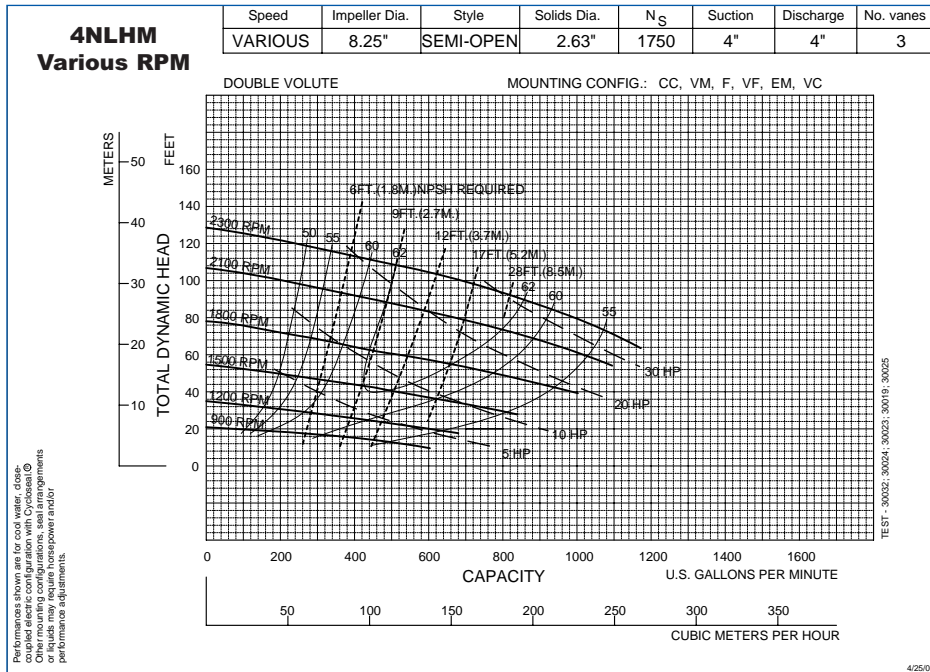
• **Efficiency**

- Effectively converts energy into fluid flow and pressure

• **Long Product Life**

- Thick walled castings
- Heavy duty shafts
- 20,000 hour bearings
- Replaceable wear rings and shaft sleeves

PERFORMANCE CURVES



Note:
Curves also available in 1800 and 1200 RPM

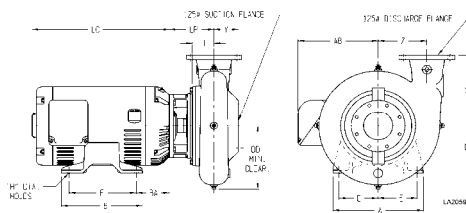


Figure 1

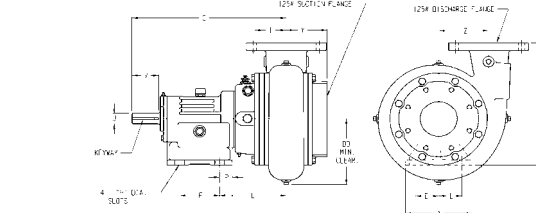


Figure 3

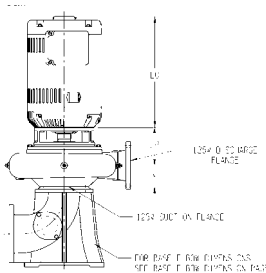


Figure 2

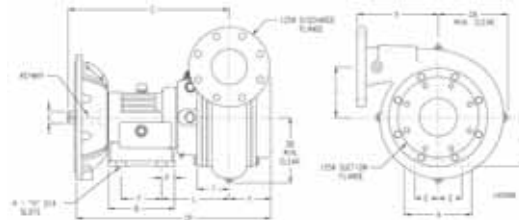
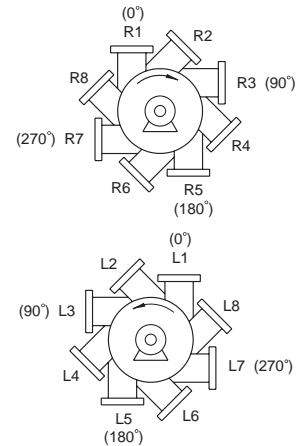


Figure 4



All configurations

PUMP DIMENSIONS

MOUNT	Fig.	A	AR	B	C	CP	D	DA	DD	E	F	H	K	L	LP	P	R	T	U	V	X	Y	Z	KEYWAY
CC	1	-	-	-	-	-	-	-	8.19	-	-	-	-	-	5.94	-	-	2.92	-	-	9	4.62	5.62	-
VM	2	12	-	12.88	27.5	-	10.5	-	11.31	5.12	10.38	0.81	-	9.12	-	0.88	-	3.94	2.5	4.5	11	4.75	9.25	.62 X .31
F5	3	7.5	-	7.36	17.34	-	5.5	-	8.19	2.62	4.5	0.56	-	7.5	-	1.44	-	3.55	1.25	3	9	4.62	5.62	.25 X .12
EM5	4	7.5	-	7.36	17.34	21.59	5.5	8.19	7.88	2.62	4.5	0.56	-	7.5	-	1.44	14.42	3.55	1.25	-	9	4.62	5.62	.25 X .12

CC MOTOR DIMENSIONS

MOTOR FRAME	AK DIM.	A	B	D	E	F	H	AB	BA	LC
213-5	8.5	9.5	8	5.25	4.25	7	0.41	7.94	4.5	13.69
254-6	8.5	11.25	11.25	6.25	5	10	0.53	9.5	5	17.94

VM MOTOR DIMENSIONS

MOTOR FRAME	AK DIM.	LC	AB
213-5	8.5	13.69	7.94
254-6	8.5	17.94	9.5

Cornell Pump Company

P.O. Box 6334 • Portland, Oregon 97228-6334

Web: www.cornellpump.com • Phone: (503) 653-0330 • Fax: (503) 653-0338

CERTIFIED TO **ISO 9001:2000**