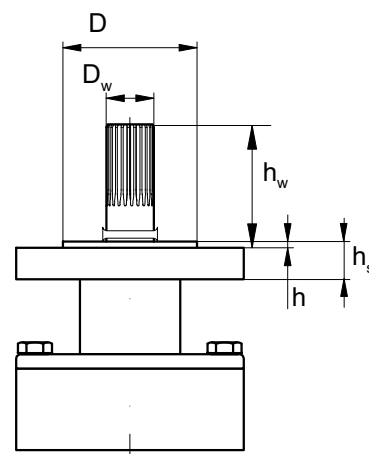
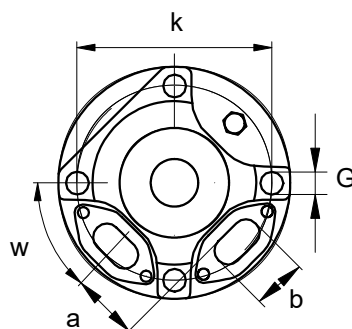
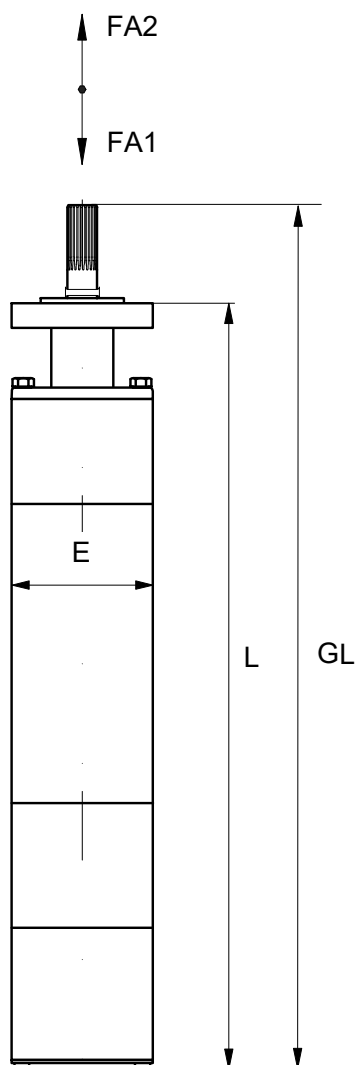


Motor

Motor execution	Submersible motor-8"-30°C	Rated power	132 kW
Motor type	8MX-13200/XP	Rated current	192 A
Frame size	8 Inch	Power factor	0.84
Winding execution	rewindable	Efficiency	83 %
Rated voltage	575 V	Motor cable	4 m 2 fl4G16 parallel
Frequency	60 Hz	Cooling flow	0.8 m/s
Speed	3440 1/min	Degree of protection	IP 68
Starting mode	DOL or inverter		
		Installation length L	mm 1752
		Weight	kg 225

Materials

Motor casing	Stainless steel / 1.4571
Shaft	Stainless steel / 1.4462
Radial bearing	Steel / carbon
Axial bearing	Steel / carbon
Winding wire	PE2/PA
Mechanical seal	SiC / SiC
Connection flange	Stainless steel / 1.4571
Fasteners	Stainless steel / 1.4401



Dimensions	Value
E	181
FA1	45 kN
FA2	1 kN
GL	1853
L	1752
a	58
b	44
D	ø127
Dw	ø38,1
G	ø18
h	5
hs	25
hw	101,5
k	ø152
w	45°