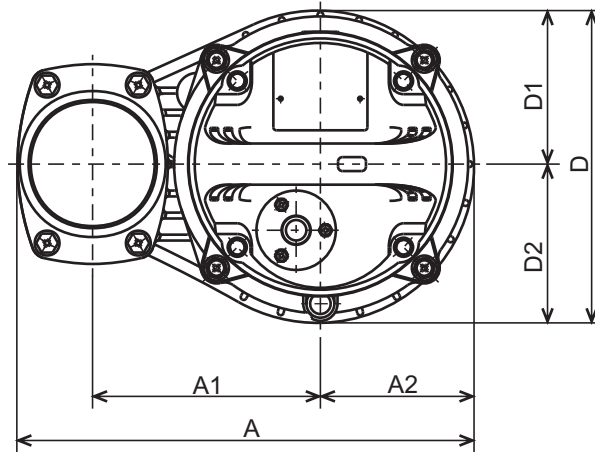


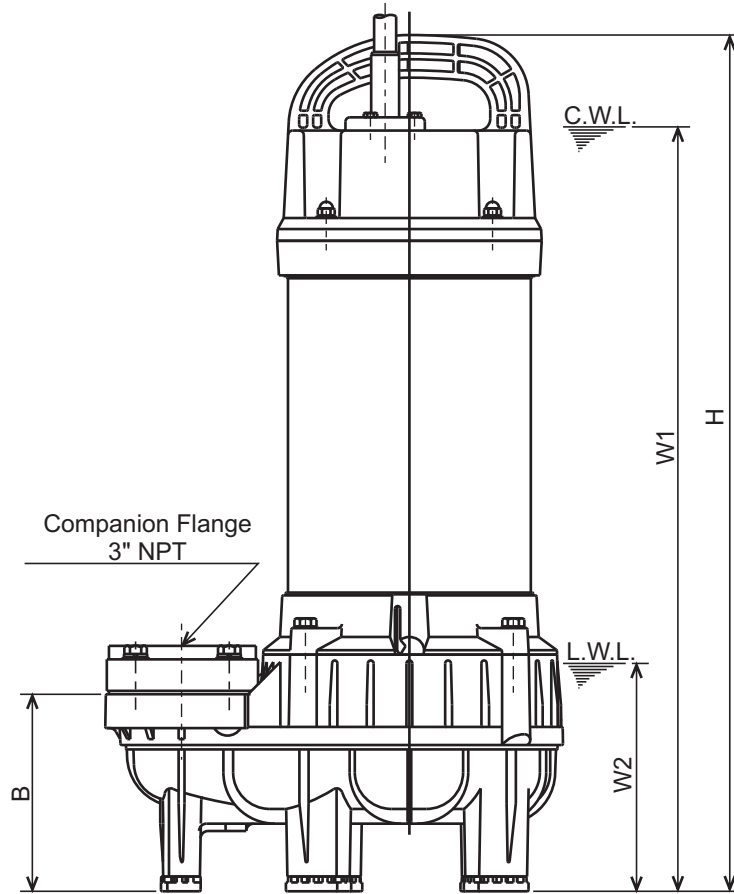


VANCS - SERIES - PU
(FRP) SEMI-VORTEX - SEWAGE & WASTEWATER PUMPS

DIMENSIONS



80PU22.2-61
80PU23.7-61



C.W.L. : Continuous running Water Level
 L.W.L. : Lowest running Water Level

DIMENSIONS:USCS (Inch)

Model	HP	NOM. SIZE	Pump & Motor								C.W.L. W1	L.W.L. W2	Wt. (lbs.)
			A	A1	A2	B	D	D1	D2	H			
80PU22.2-61	3	3"	12 1/4	6 1/8	4 1/8	5 1/4	8 3/8	4 1/8	4 1/4	22 15/16	20 1/2	6 1/8	48
80PU23.7-61	5	3"	12 1/4	6 1/8	4 1/8	5 1/4	8 3/8	4 1/8	4 1/4	24 5/16	21 7/8	6 1/8	59

DIMENSIONS:METRIC (mm)

Model	kW	NOM. SIZE	Pump & Motor								C.W.L. W1	L.W.L. W2	Wt. (kg)
			A	A1	A2	B	D	D1	D2	H			
80PU22.2-61	2.2	80	311	155	105	134	212	104	108	583	520	155	22
80PU23.7-61	3.7	80	311	155	105	134	212	104	108	618	555	155	27