

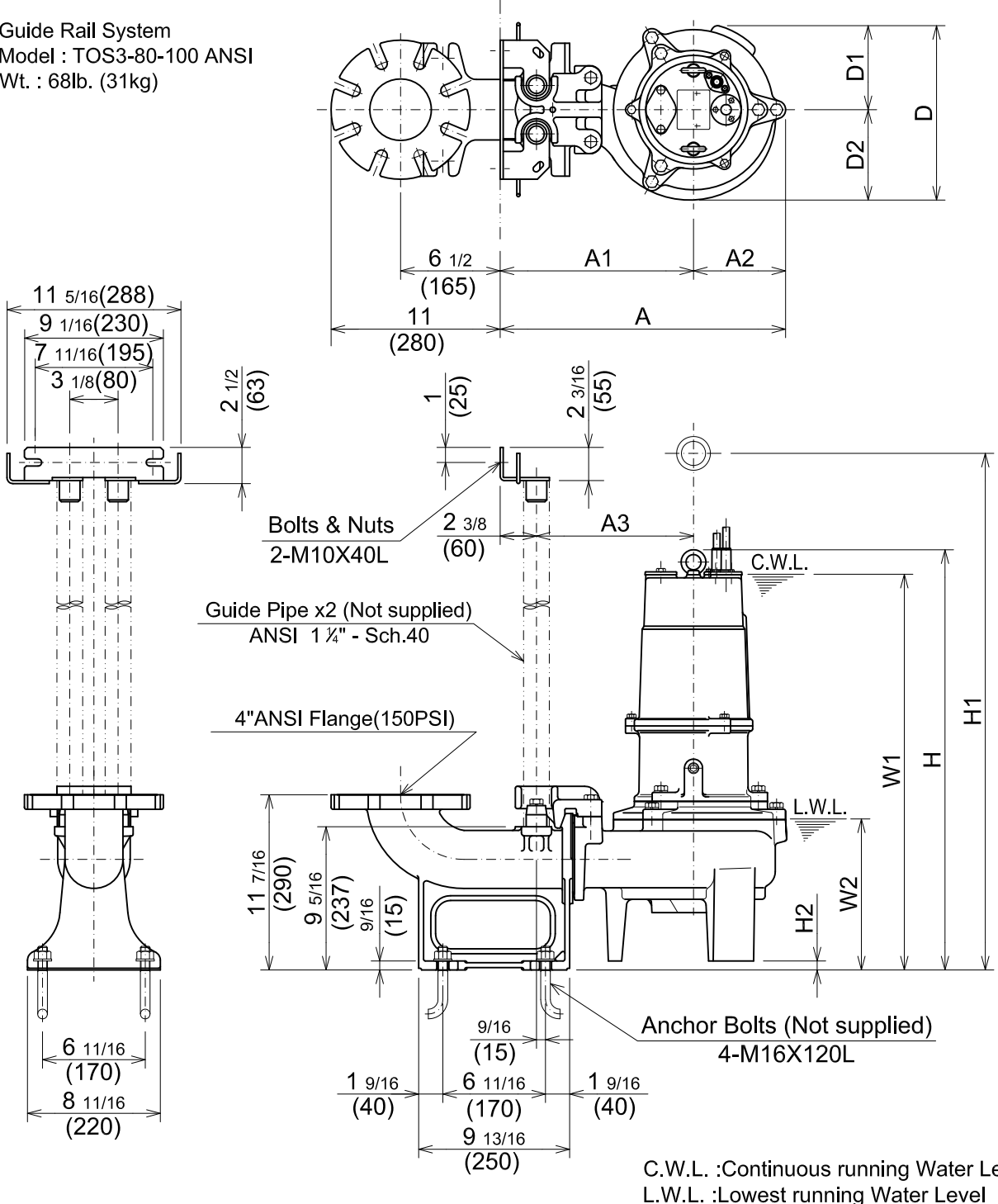


**BZ-SERIES**  
**SEWAGE & WASTEWATER PUMPS**

**DIMENSIONS**

**TOS100BZ43.7 -61**

Guide Rail System  
Model : TOS3-80-100 ANSI  
Wt. : 68lb. (31kg)



C.W.L. :Continuous running Water Level  
L.W.L. :Lowest running Water Level

**DIMENSIONS:USCS(Inch)**

Model	HP	NOM. SIZE	Pump & Motor									C.W.L.	L.W.L.	*Wt. (lbs.)	
			A	A1	A2	A3	D	D1	D2	H	H1				H2
TOS100BZ43.7 -61	5	4"	18 5/8	12 5/8	6	10 1/4	11 3/8	5 1/2	5 7/8	27 3/8	32 3/16	9/16	25 3/4	9 7/8	207

**DIMENSIONS:METRIC(mm)**

Model	kW	NOM. SIZE	Pump & Motor									C.W.L.	L.W.L.	*Wt. (kg)	
			A	A1	A2	A3	D	D1	D2	H	H1				H2
TOS100BZ43.7 -61	3.7	100	473	320	153	260	289	139	150	696	817	15	655	250	94

\*Excluding TOS & Cable.