



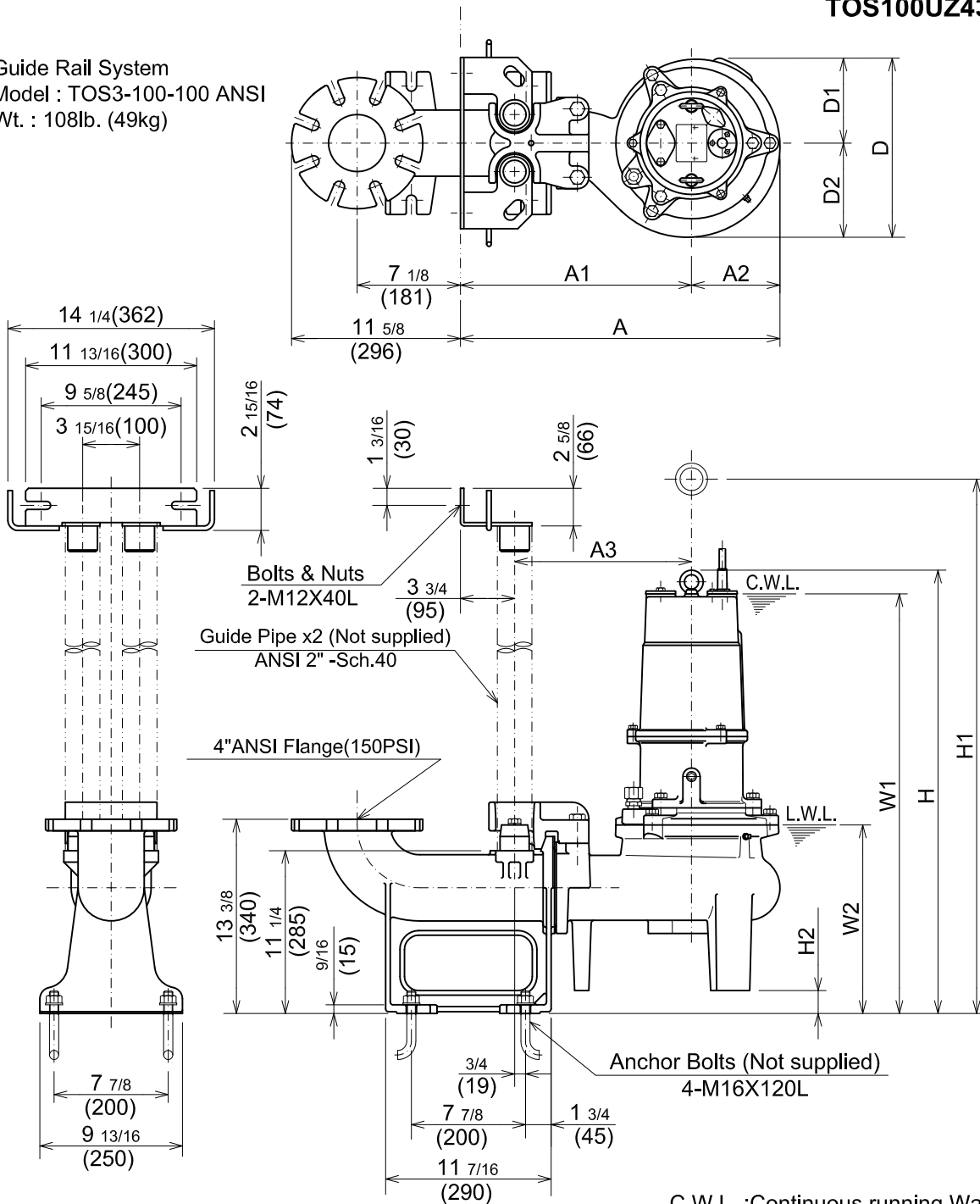
**TSURUMI PUMP**

**UZ-SERIES**  
**VORTEX - SEWAGE & WASTEWATER PUMPS**

**DIMENSIONS**

**TOS100UZ43.7 -61**

Guide Rail System  
Model : TOS3-100-100 ANSI  
Wt. : 108lb. (49kg)



C.W.L. :Continuous running Water Level  
L.W.L. :Lowest running Water Level

**DIMENSIONS:USCS(Inch)**

Model	HP	NOM. SIZE	Pump & Motor									C.W.L.	L.W.L.	*Wt. (lbs.)	
			A	A1	A2	A3	D	D1	D2	H	H1				H2
TOS100UZ43.7 -61	5	4"	22 1/16	15 15/16	6 1/8	12 3/16	12 3/8	5 7/8	6 1/2	30 9/16	35 3/8	1 9/16	28 7/8	13	154

**DIMENSIONS:METRIC(mm)**

Model	kW	NOM. SIZE	Pump & Motor									C.W.L.	L.W.L.	*Wt. (kg)	
			A	A1	A2	A3	D	D1	D2	H	H1				H2
TOS100UZ43.7 -61	3.7	100	560	405	155	310	314	149	165	777	898	40	735	330	70

\*Excluding TOS & Cable.