



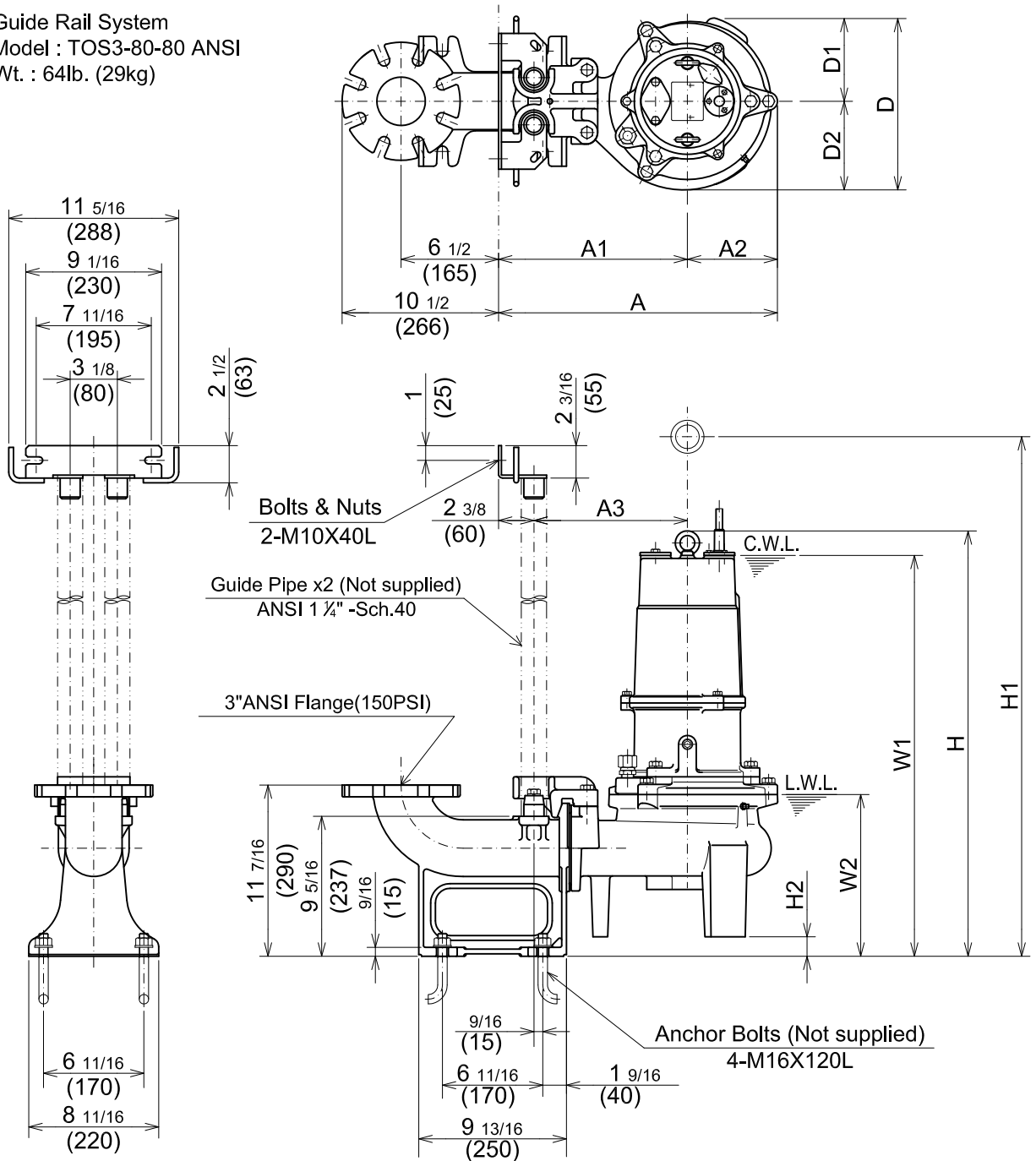
TSURUMI PUMP

UZ-SERIES
VORTEX - SEWAGE & WASTEWATER PUMPS

DIMENSIONS

TOS80UZ43.7 -61

Guide Rail System
 Model : TOS3-80-80 ANSI
 Wt. : 64lb. (29kg)



C.W.L. :Continuous running Water Level
 L.W.L. :Lowest running Water Level

DIMENSIONS:USCS(Inch)

Model	HP	NOM. SIZE	Pump & Motor									C.W.L.	L.W.L.	*Wt. (lbs.)	
			A	A1	A2	A3	D	D1	D2	H	H1				H2
TOS80UZ43.7 -61	5	3"	18 5/8	12 5/8	6	10 1/4	11 7/16	5 9/16	5 7/8	28 3/8	33 1/8	1 5/16	26 3/4	10 7/8	139

DIMENSIONS:METRIC(mm)

Model	kW	NOM. SIZE	Pump & Motor									C.W.L.	L.W.L.	*Wt. (kg)	
			A	A1	A2	A3	D	D1	D2	H	H1				H2
TOS80UZ43.7 -61	3.7	80	473	320	153	260	291	141	150	721	842	33	680	275	63

*Excluding TOS & Cable.