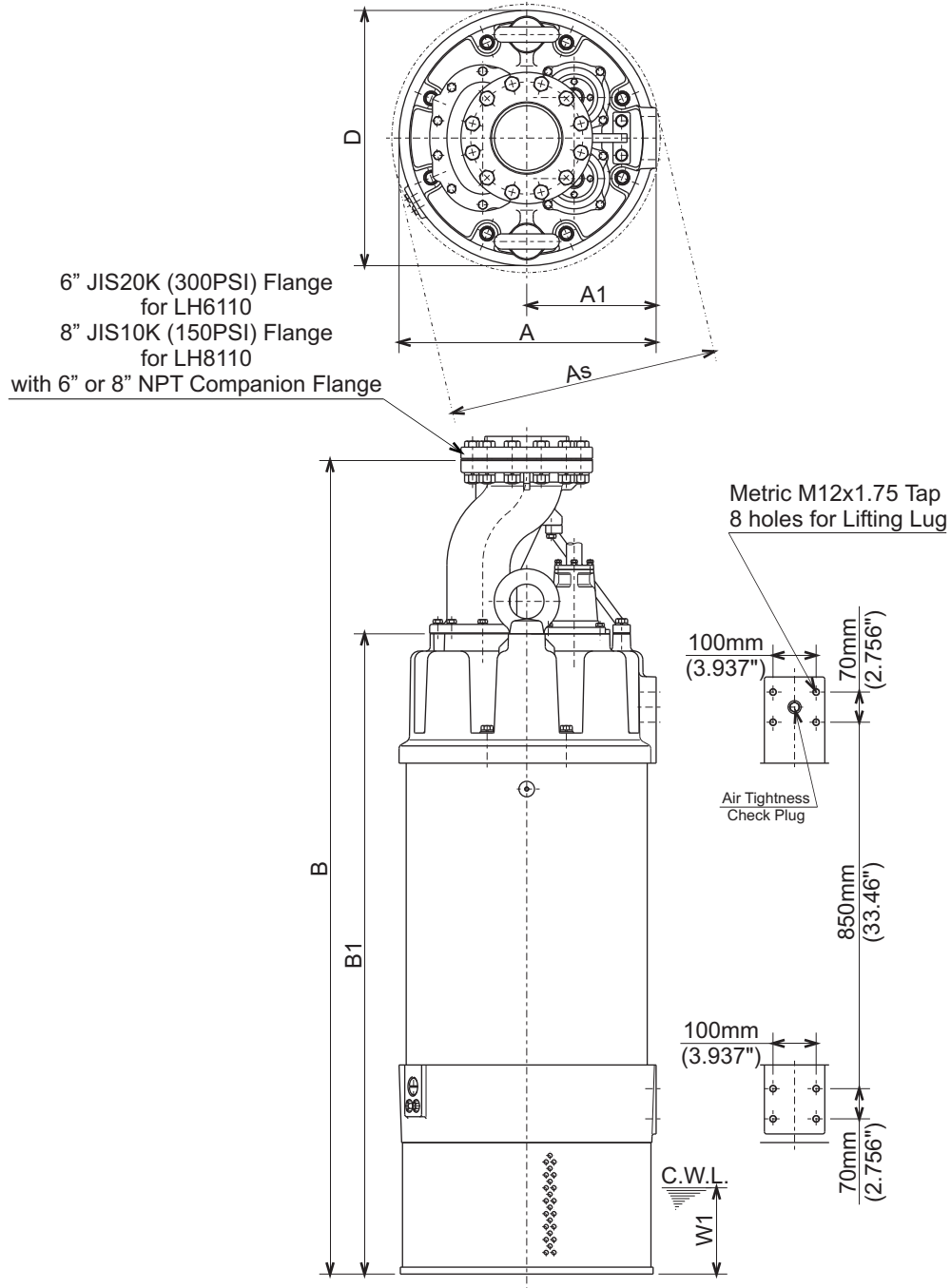




**LH - SERIES
DEWATERING PUMPS**

DIMENSIONS

**LH6110-61
LH8110-61**



C.W.L. : Continuous running Water Level

DIMENSIONS:USCS (Inch)

Model	HP	NOM. SIZE	Pump & Motor						C.W.L.		Wt. (lbs.)
			A	As	A1	B	B1	D	W1		
LH6110-61	150	6"	23 7/16	24 1/2	11 13/16	74 5/16	58 7/16	23 5/16	7 7/8	2670	
LH8110-61	150	8"	23 7/16	24 1/2	11 13/16	74 5/16	58 7/16	23 5/16	7 7/8	2670	

DIMENSIONS:METRIC (mm)

Model	kW	NOM. SIZE	Pump & Motor						C.W.L.		Wt. (kg)
			A	As	A1	B	B1	D	W1		
LH6110-61	110	150	596	622	300	1887	1485	592	200	1210	
LH8110-61	110	200	596	622	300	1887	1485	592	200	1210	