

PARTS LIST		WASTEWATER CUTTER PUMP			11/15/2013	
ITEM	PART No.	DESCRIPTION	QTY	SIZE	MATERIAL	NOTES
1	801-00114921-9	Cabtyre Cable Set (10m)USA	1	VCT4Cx2mm2	BE/CE	
2	801-14002117-9	Hex.Bolt	3	M5x20	SUS304	
3	801-14242218-9	Seal Washer	3	PM-5	SUS+NBR	
4	801-00311120-9	Gland	1		SUS304	
5	801-00914619-9	Terminal	4	CE-5	CU	
6	801-14005217-9	Hex.Bolt	2	M8x16	SUS304	
7	801-12719512-9	Protector Fixing Plate	1	22/37-BE2	SUS304	
8	801-12144613-9	Packing	1	22/37-BE2	NBR	*
9	801-05347315-9	Motor Protector 220V-60Hz	1	KA313-GDZL103	(T.C)	
9	801-05347416-9	Motor Protector 440/460/480V-60Hz	1	KA313-GQZL104	(T.C)	
10	801-14312612-9	Pan Screw (w/Spring Washer/Plain Washer)	2	M4x12	SWRM	
11	801-07210017-9	Eye Bolt	2	M10	SF	
12	801-06451413-9	Motor Frame (2nd)	1		FC	
13	801-14005510-9	Hex.Bolt	3	M8x25	SUS304	
14	801-14216318-9	Spring Washer	3	M8	SUS304	
15	801-00911610-9	Terminal	1	R-2-4	CU	
16	801-14312410-9	Pan Screw (w/Spring Washer/Plain Washer)	1	M4x6	SWRM	
17	801-14219610-9	Wave Washer	1	6205/6304	SK5	
18	801-12236712-9	O-Ring	1	52xd3.1	NBR	*
19	801-05210712-9	Bearing (1st)	1	6304ZZC3		
19	801-05218817-9	Bearing (w/O-ring)(2nd)	1	AC-6304ZZC3		
20	801-05811713-9	Lead Wire Protection Plate	1	d70xd140x1.6t	Bakelite	
21	801-05666919-9	Stator 220V-60Hz	1Set			
21	801-05667710-9	Stator 440V-60Hz	1Set			
22	801-05566815-9	Rotor (1st)	1Set	w/Bearing		DISCONTINUED
22	801-05573211-9	Rotor (2nd)	1Set	w/Bearing		
23	801-14708116-9	Impeller Key	1	7x7x22L	SUS420	
24	801-06117014-9	Bearing Collar	1	d35.1xd46x2t	SPCC	
25	801-14304213-9	Pan Screw	3	M6x10	SWRM	
26	801-06219619-9	Bearing Fixing Washer	3	d8xd20.5x2.3t	SS	
27	801-05211018-9	Bearing	1	6307ZZC3		
28	801-14602216-9	Retaining Ring	1	C35	SK5	
29	801-12233319-9	O-Ring	1	170xd3.1	NBR	*
30	801-07130218-9	Collar	1	32l	SECC	DISCONTINUED
31	801-14009815-9	Hex.Bolt	3	M12x35	SUS304	
32	801-06045412-9	Bearing Housing	1		FC	
33	801-12124712-9	Packing	1	d12.3xd18x2t	PE	*
34	801-03511318-9	Oil Plug	1	M12x14	SUS304	
35	801-02519412-9	Mechanical Seal	1	H-30	SiC	
36	801-03012417-9	Seal Stopper	1	H-30/35	SPC	
37	801-14307010-9	Pan Screw	3	M5x6	SWRM	
38	801-12224614-9	O-Ring	1	180xd3.1	NBR	*
39	801-02052612-9	Pump Casinq	1	22-BE2/CE2	FC	
40	801-04610713-9	Air Release Valve	1	PT-1/2	Nylon	

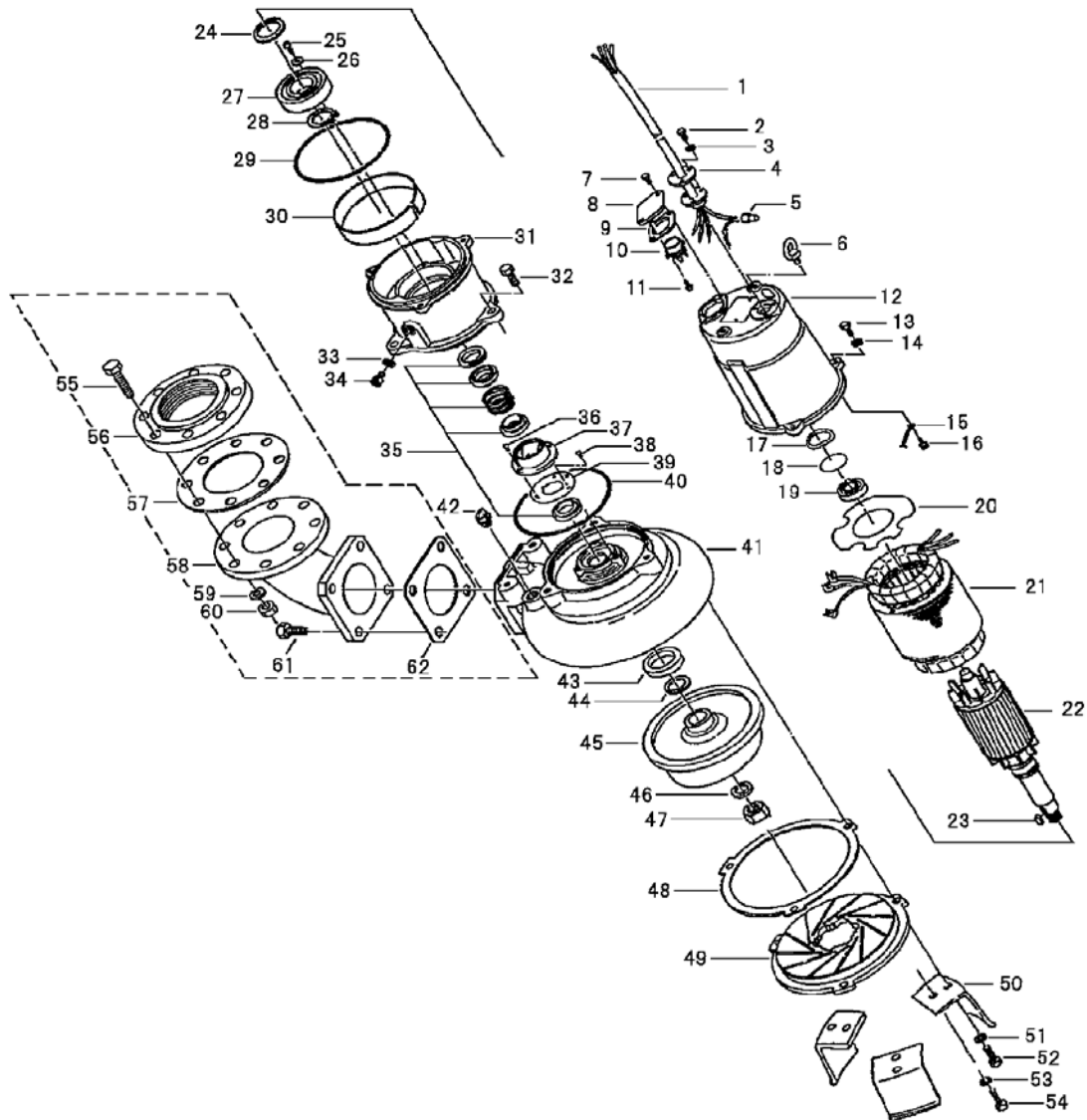
* Indicates items included in set

PARTS LIST		WASTEWATER CUTTER PUMP			11/15/2013	
ITEM	PART No.	DESCRIPTION	QTY	SIZE	MATERIAL	NOTES
41	801-02611118-9	Oil Seal	1	TC-456812	NBR	
42	801-04010728-9	Impeller Shim		d25.2xd38x0.3t	SUS304	
43	801-021L8214-9	Impeller (60Hz)	1	100C42.2-CR-61	FC	
44	801-14216813-9	Spring Washer	1	M20	SUS304	
45	801-14100912-9	Hex.Nut	1	M20	SUS304	
46	801-12010413-9	Packing (S.Cover)		d230.5xd258x0.3t	M-Sheet	
47	801-022B4913-9	Suction Cover	1	22/37-CE2	HiCrFC	
48	801-02346915-9	Pump Stand	3	22/37-BE3	SPHC	
49	801-14216510-9	Spring Washer	3	M12	SUS304	
50	801-14009815-9	Hex.Bolt	3	M12x35	SUS304	
51	801-14216318-9	Spring Washer	3	M8	SUS304	
52	801-14005419-9	Hex.Bolt	3	M8x20	SUS304	
53	801-14000056-9	Hex.Bolt	8	M16x75	SWRM	
54	801-04813910-9	Screwed Flange	1	NPT-4(JIS10K)	FC	
55	801-12110634-9	Packing (For 100mm)	1	JIS10Kx100mm	NR	
56	801-03717019-9	Discharge Bend(For 100mm)	1	80x100mm	FC	
57	801-14216637-9	Spring Washer	8	M16	SWRH	
58	801-14100811-9	Hex.Nut	8	M16	SUS304	
59	801-14012411-9	Hex.Bolt	4	M16x40	SUS304	
60	801-12115219-9	Packing	1	145mm2(P.C.145)	NBR	*
		Oil Lifter Version				
AA	801-14307023-9	Pan Screw	2	M5x6	SWRM	
BB	801-03014211-9	Oil Lifter	1	H-30(A)(T)	Resin	
CC	801-14307010-9	Pan Screw	3	M5x6	SWRM	
DD	801-03015113-9	Seal Stopper	1	H-30(A)(T)	SPCC	
		Packing O-Ring Set				
	801-17347411-9	Packing O-Ring Set	1Set	(Marked by *)		
		Lubricant		Turbine Oil VG32 1,300ml		

PARTS LIST		WASTEWATER CUTTER PUMP				11/15/2013
ITEM	PART No.	DESCRIPTION	QTY	SIZE	MATERIAL	NOTES

EXPLODED VIEW

100C42.2-51/61(22-CE4)



C-01452-1