

PARTS LIST		THREE PHASE GRINDER PUMP			3/4/2015	
ITEM	PART No.	DESCRIPTION	QTY	SIZE	MATERIAL	NOTES
1	140-052-17	Hex.Bolt	2	M8x16	SUS304	
2	127-000-16	Protector Fixing Plate	1		SUS304	
3	121-000-23	Packing	1		NBR	*
4	053-000-31	Motor Protector 208/230V-60Hz(USA)	1	KA313-GDBL110	(T.C)	
	053-394-11	Motor Protector 460V-60Hz(USA)	1	KA313-GBXL102	(T.C)	
5	143-126-38	Pan Screw (w/Spring Washer/Plain Washer)	2	M4x12	SWRM	
6	001-149-21	Cabtyre Cable Set (32') 60Hz(USA)	1	VCT4Cx2mm2	BE/CE	
7	140-021-17	Hex.Bolt	3	M5x20	SUS304	
8	142-422-18	Seal Washer	3	PM-5	SUS+NBR	
9	003-111-20	Gland	1		SUS304	
10	009-146-19	Terminal	4	CE-5	CU	
11	072-100-20	Eye Bolt	2	M10	SUS304	
12	140-057-12	Hex.Bolt	3	M8x35	SUS304	
13	142-163-18	Spring Washer	3	M8	SUS304	
14	064-000-20	Motor Frame	1		FC	
15	009-212-17	Earth Terminal	1Set	2mm2x130L		
16	143-085-21	Pan Screw (w/Spring Washer)	1	M4x6	SWRM	
17	122-333-19	O-Ring	1	170xd3.1	NBR	*
18	058-000-04	Lead Wire Protection Plate	1	d66xd150x1.5t	Bakelite	
19	142-196-10	Wave Washer	1	6205/6304	SK5	
20	052-188-17	Bearing (w/O-ring)	1	AC-6304ZZC3		
21	056-001-27	Stator 208/230V-60Hz(USA)	1Set			
	056-001-29	Stator 460V-60Hz(USA)	1Set			
22	055-000-35	Rotor	1Set		S4240	
23	147-024-11	Impeller Key	1	8x8x38L	SUS420	
24	140-000-06	Hex.Bolt (w/Spring Washer/Plain Washer)	3	M6x12	SWCH	
25	052-139-13	Bearing	1Set	6308ZZD2C3		
26	071-336-11	Collar	1	41L	SECC	
27	035-113-18	Oil Plug	1	M12x14	SUS304	
28	121-247-12	Packing	1	d12.3xd18x2t	PE	*
29	060-000-19	Bearing Housing	1		FC	
30	140-080-14	Hex.Bolt	4	M10x45	SUS304	
31	140-476-11	Hex.Bolt (w/Spring Washer)	2	M8x25	SUS304	
32	025-194-12	Mechanical Seal	1	H-30	SiC	
33	143-070-23	Pan Screw	2	M5x6	SWRM	
34	030-142-11	Oil Lifter	1	H-30(A)(T)	Resin	
35	143-070-10	Pan Screw	3	M5x6	SWRM	
36	030-151-13	Seal Stopper	1	H-30(A)(T)	SPCC	
37	122-246-14	O-Ring	1	180xd3.1	NBR	*
38	029-274-19	Oil Casing	1	22/37-MGC	FC	
39	120-127-12	Packing		d171xd186x0.3t	PE	
40	026-109-13	Oil Seal	1	TC-355511	NBR	
41	071-214-12	Shaft Sleeve	1	d25xd35x17l	SUS403	
42	021E2311	Impeller (60Hz)	1	50MG22.2-63	FC	

* Indicates items included in set

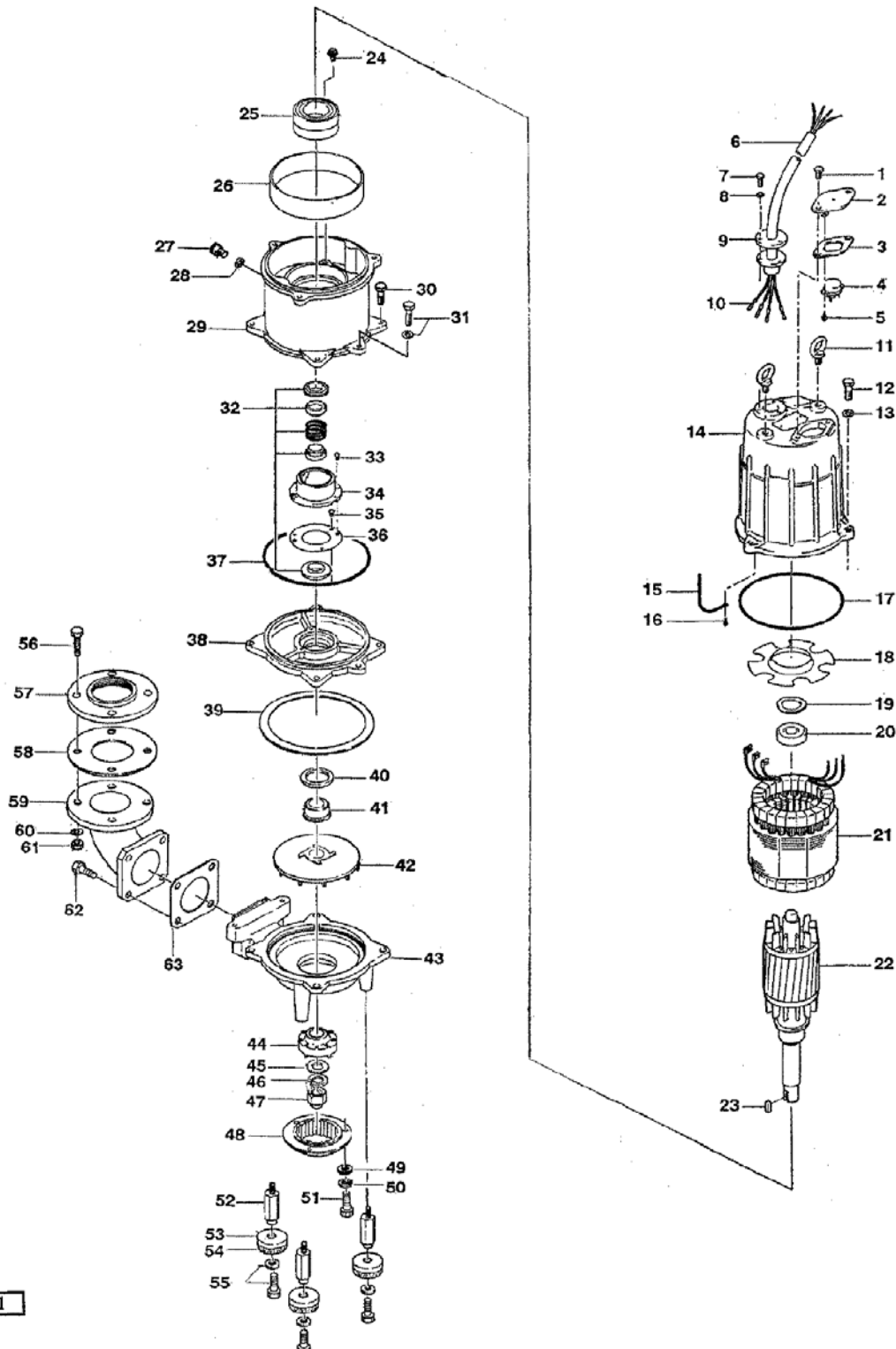
PARTS LIST		THREE PHASE GRINDER PUMP			3/4/2015	
ITEM	PART No.	DESCRIPTION	QTY	SIZE	MATERIAL	NOTES
43	020-800-13	Pump Casing (60Hz)	1	22-MGC,37-MGC(60Hz)	FC	
44	024-147-17	Rotating Cutter	1	22/37-MGC	HiCrFC	
45	142-332-10	Plain Washer	1	d18xd34x3t	SUS304	
46	142-166-11	Spring Washer	1	M16	SUS304	
47	141-033-15	Hex.Cap Nut	1	M16	SUS304	
48	022-652-14	Stationary Cutter	1	22/37-MGC	HiCrFC	
49	142-113-13	Plain Washer	3	M6(D=11.5)	SUS304	
50	142-162-17	Spring Washer	3	M6	SUS304	
51	140-249-13	Hex.Socket Cap Bolt	3	M6x15	SUS304	
52	144-502-19	Stud Bolt	3	M8x67(-18/16.5)	SUS410	
53	047-113-28	Impeller Thread Protect.Cover	3	No.3A(13.5)	SUS304	
54	165-008-15	Rubber Feet	3	15/37-MGC	NBR	
55	140-487-15	Hex.Bolt (w/Plain Washer)	3	M8x20	SUS304	
56	140-129-32	Hex.Bolt	4	M16x65	SWRM	
57	048-196-15	Screwed Flange	1	NPT-2(JIS10K)	FC	
58	121-103-31	Packing	1	JIS10Kx50mm	NR	
59	037-132-19	Discharge Bend	1	50mm(JIS10K,d12)	FC	
60	142-166-37	Spring Washer	4	M16	SWRH	
61	141-008-11	Hex.Nut	4	M16	SUS304	
62	140-079-10	Hex.Bolt	4	M10x40	SUS304	
63	121-142-16	Packing	1	90mm2(P.C.98)	NBR	*
		Parts for guide rail fittings				
	093-151-18	Guide Hook	1	TOS-32/50H	FCD	
	140-082-16	Hex.Bolt	2	M10x55	SUS304	
	142-164-19	Spring Washer	2	M10	SUS304	
	091-204-24	Duck Foot Bend	1	TOS-50H	FC	
	096-100-11	Guide Connector	2	26mm	SS	
	140-080-14	Hex.Bolt	2	M10x45	SUS304	
	142-164-19	Spring Washer	2	M10	SUS304	
	094-208-14	Guide Support	1	TOS-50C	SUS304	
	140-079-78	Hex.Bolt	2	M10x40	SUS304	
	141-006-19	Hex.Nut	2	M10	SUS304	
	142-128-11	Plain Washer	2	M10	SUS304	
	173-000-64	Packing O-Ring Set	1Set	(Marked by *)		
3	121-000-23	Packing (Protector Fixing Plate)	1		NBR	*
17	122-333-19	O-Ring (M.Frame/Brg.Housing)	1	170xd3.1	NBR	*
28	121-247-12	Packing (Oil Plug)	1	d12.3xd18x2t	PE	*
37	122-246-14	O-Ring (Brg.Housing/O.Casing)	1	180xd3.1	NBR	*
63	121-142-16	Packing (Discharge Bend)	1	90mm2(P.C.98)	NBR	*
		Lubricant		Turbine Oil VG32 1,300ml		
	095-147-17	Chain	1	6mmx5M	SS	10120
	011-102-10	Shackle	1	9mm	SS	460
	095-106-14	Chain	1	6mm(4L)	SS	4060
	011-101-19	Shackle	2	6mm	SS	460

* Indicates items included in set

PARTS LIST		THREE PHASE GRINDER PUMP			3/4/2015	
ITEM	PART No.	DESCRIPTION	QTY	SIZE	MATERIAL	NOTES

EXPLODED VIEW

50MG22.2-53/63



C-00661-1

* Indicates items included in set