

PARTS LIST		THREE PHASE GRINDER PUMP					7/3/2018
ITEM	PART No.	DESCRIPTION	QTY	SIZE	MATERIAL		NOTES
1	140-052-17	Hex.Bolt	2	M8x16	SUS304		
2	127-000-16	Protector Fixing Plate	1		SUS304		
3	121-000-23	Packing	1		NBR	*	
4	053-000-31	Motor Protector 220V-60Hz(USA)	1	KA313-GDBL110	(T.C)		
4	053-394-11	Motor Protector 440V-60Hz(USA)	1	KA313-GBXL102	(T.C)		
5	143-126-12	Pan Screw (w/Spring Washer/Plain Washer)	2	M4x12	SWRM		
6	001-150-25	Cabtyre Cable Set (32') 60Hz(USA)	1	VCT4Cx3.5mm2	BE/CE		
7	140-021-17	Hex.Bolt	3	M5x20	SUS304		
8	142-422-18	Seal Washer	3	PM-5	SUS+NBR		
9	003-111-20	Gland	1		SUS304		
10	009-275-18	Compression type Terminal	4	TGNB-5.5(Insulated)	CU		
11	072-100-20	Eye Bolt	2	M10	SUS304		
12	140-057-12	Hex.Bolt	3	M8x35	SUS304		
13	142-163-18	Spring Washer	3	M8	SUS304		
14	064-000-20	Motor Frame	1		FC		
15	009-212-17	Earth Terminal	1Set	2mm2x130L			
16	143-085-21	Pan Screw (w/Spring Washer)	1	M4x6	SWRM		
17	122-333-19	O-Ring	1	170xd3.1	NBR	*	
18	058-000-04	Lead Wire Protection Plate	1	d66xd150x1.5t	Bakelite		
19	142-196-10	Wave Washer	1	6205/6304	SK5		
20	052-188-17	Bearing (w/O-ring)	1	AC-6304ZZC3			
21	056-001-27	Stator 220V-60Hz(USA)	1Set				
21	056-001-29	Stator 440V-60Hz(USA)	1Set				
22	055-000-35	Rotor	1Set		S4240		
23	147-024-11	Impeller Key	1	8x8x38l	SUS420		
24	140-000-06	Hex.Bolt (w/Spring Washer/Plain Washer)	3	M6x12	SWCH		
25	052-139-13	Bearing	1Set	6308ZZD2C3			
26	071-336-11	Collar	1	41L	SECC		
27	035-113-18	Oil Plug	1	M12x14	SUS304		
28	121-247-12	Packing	1	d12.3xd18x2t	PE	*	
29	060-000-19	Bearing Housing	1		FC		
30	140-080-14	Hex.Bolt	4	M10x45	SUS304		
31	140-488-16	Hex.Bolt (w/Spring Washer)	2	M8x30	SUS304		
32	025-000-73	Mechanical Seal	1	H-30T	SiC		supercedes 025-246-10
33	143-070-23	Pan Screw	2	M5x6	SWRM		
34	030-142-11	Oil Lifter	1	H-30(A)(T)	Resin		
35	143-070-10	Pan Screw	3	M5x6	SWRM		
36	030-151-13	Seal Stopper	1	H-30(A)(T)	SPCC		
37	122-246-14	O-Ring	1	180xd3.1	NBR	*	
38	029-274-19	Oil Casing	1	22/37-MGC	FC		
39	120-127-12	Packing	1	d171xd186x0.3t	PE		
40	026-109-13	Oil Seal	1	TC-355511	NBR		
41	071-214-12	Shaft Sleeve	1	d25xd35x17l	SUS403		
42	021E2210	Impeller (60Hz)	1	50MG23.7-63	FC		

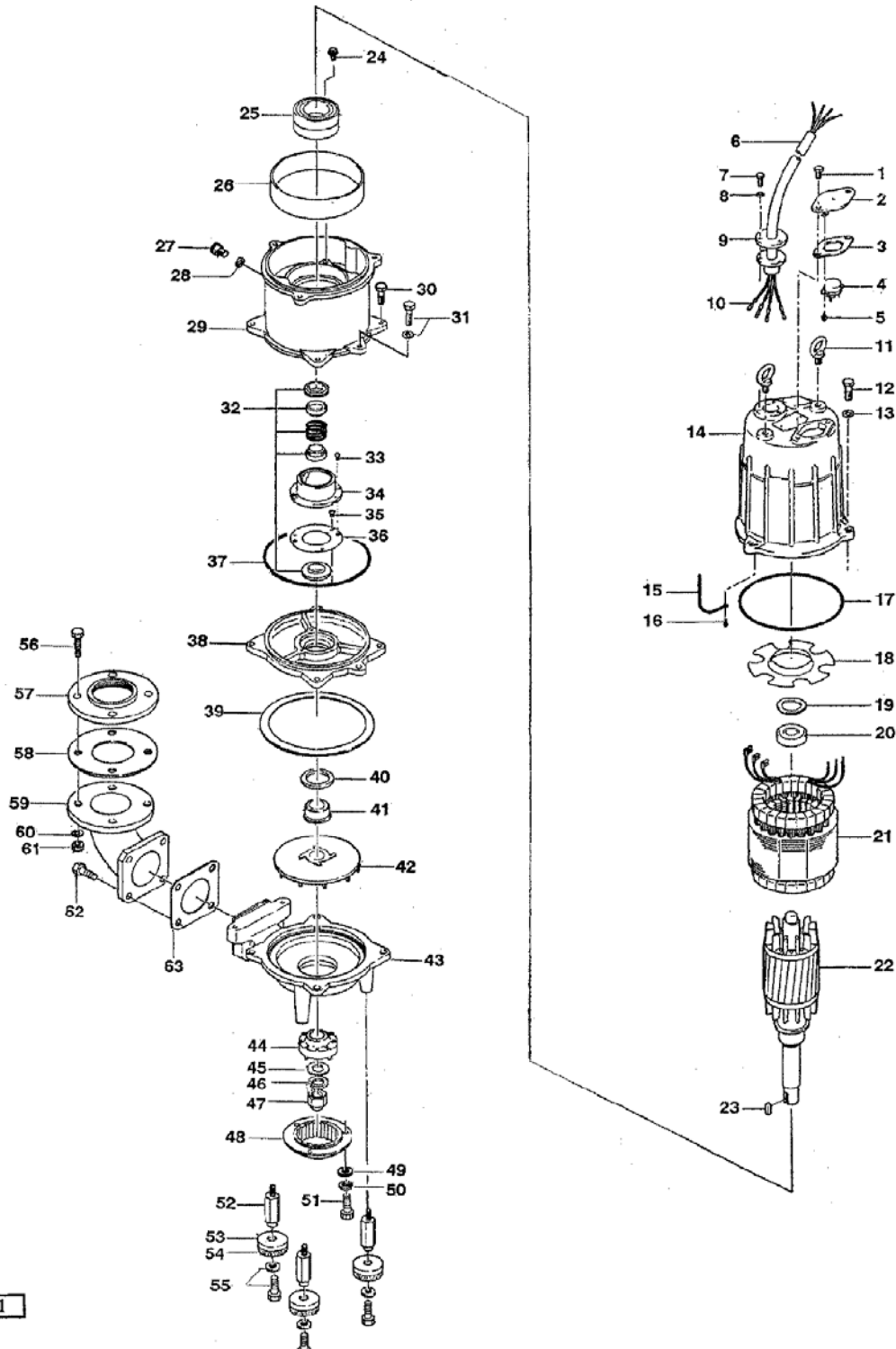
* Indicates items included in set

PARTS LIST		THREE PHASE GRINDER PUMP			7/3/2018	
ITEM	PART No.	DESCRIPTION	QTY	SIZE	MATERIAL	NOTES
43	020-800-13	Pump Casing (60Hz)	1	50MG23.7-63	FC	
44	024-147-17	Rotating Cutter	1	22/37-MGC	HiCrFC	
45	142-332-10	Plain Washer	1	d18xd34x3t	SUS304	
46	142-166-11	Spring Washer	1	M16	SUS304	
47	141-033-15	Hex.Cap Nut	1	M16	SUS304	
48	022-652-14	Stationary Cutter	1	22/37-MGC	HiCrFC	
49	142-113-13	Plain Washer	3	M6(D=11.5)	SUS304	
50	142-162-17	Spring Washer	3	M6	SUS304	
51	140-249-13	Hex.Socket Cap Bolt	3	M6x15	SUS304	
52	144-502-19	Stud Bolt	3	M8x67(-18/16.5)	SUS410	
53	047-113-28	Rubber Feet Cover	3	No.3A(Impeller Pro.Cover)	SUS304	
54	165-008-15	Rubber Feet	3	15/37-MGC	NBR	
55	140-487-15	Hex.Bolt (w/plain washer)	3	M8x20	SUS304	
56	140-129-32	Hex.Bolt	4	M16x65	SWRM	
57	048-196-15	Screwed Flange	1	NPT-2(JIS10K)	FC	
58	121-103-31	Packing	1	JIS10Kx50mm	NR	
59	037-132-19	Discharge Bend	1	50mm(JIS10K,d12)	FC	
60	142-166-37	Spring Washer	4	M16	SWRH	
61	141-008-11	Hex.Nut	4	M16	SUS304	
62	140-079-10	Hex.Bolt	4	M10x40	SUS304	
63	121-142-16	Packing	1	90mm2(P.C.98)	NBR	*
	173-000-64	Packing O-Ring Set	1Set	(Marked by *)		
3	121-000-23	Packing (Protector Fixing Plate)	1		NBR	*
17	122-333-19	O-Ring (M.Frame/Brg.Housing)	1	170xd3.1	NBR	*
28	121-247-12	Packing (Oil Plug)	1	d12.3xd18x2t	PE	*
37	122-246-14	O-Ring (Brg.Housing/O.Casing)	1	180xd3.1	NBR	*
63	121-142-16	Packing (Discharge Bend)	1	90mm2(P.C.98)	NBR	*
		Lubricant		Turbine Oil VG32 1,300ml		

PARTS LIST		THREE PHASE GRINDER PUMP			7/3/2018	
ITEM	PART No.	DESCRIPTION	QTY	SIZE	MATERIAL	NOTES

EXPLODED VIEW

50MG23.7-53/63



C-00661-1