

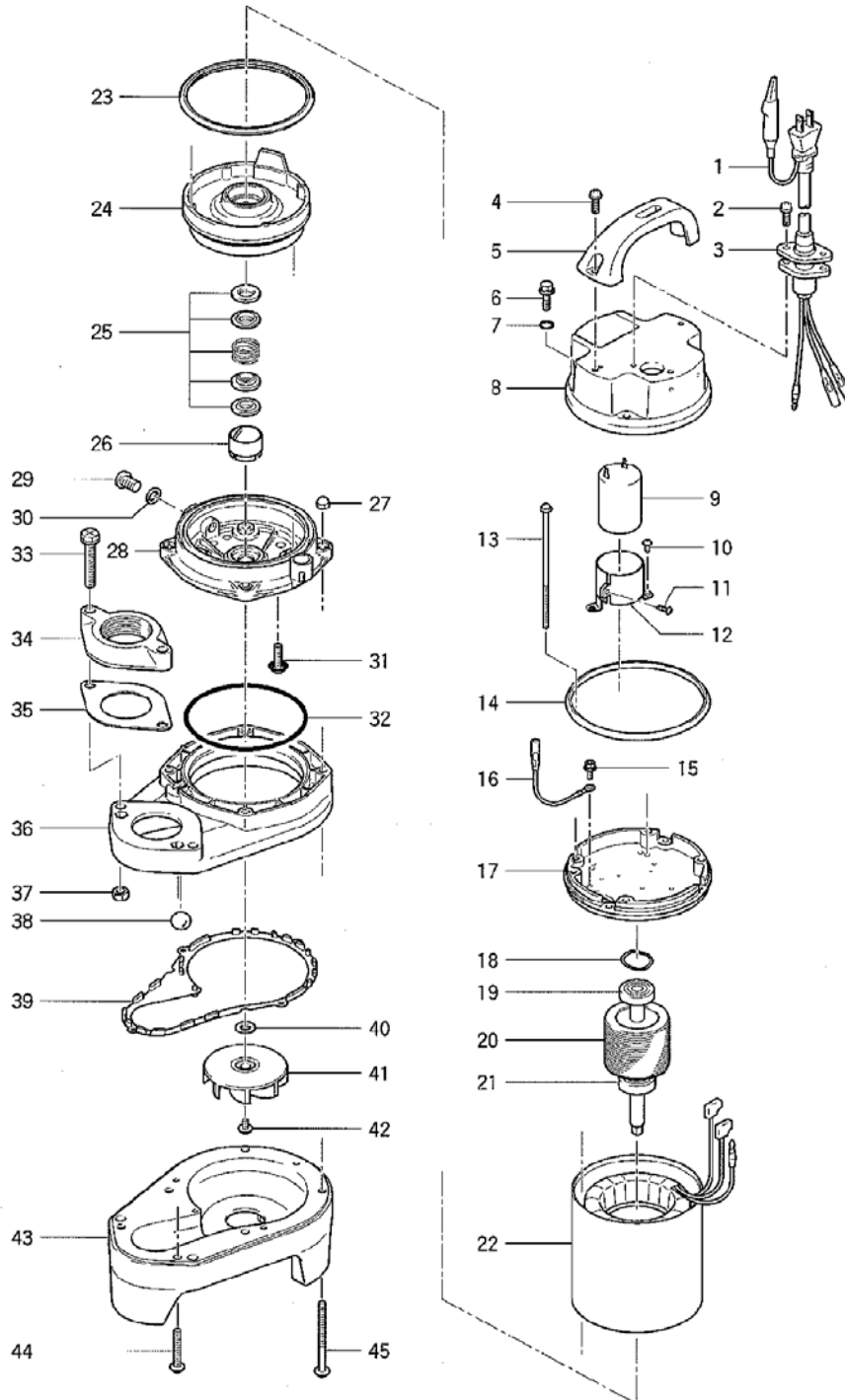
PARTS LIST		VANCS SEWAGE & WASTEWATER PUMP			3/1/2017	
ITEM	PART No.	DESCRIPTION	QTY	SIZE	MATERIAL	NOTES
1	001-943-36	Cabtyre Cable Set (20') 120V-60Hz(USA)	1	STOW3x1.25mm2 (16AWG)	LB	
	001-004-33	Cabtyre Cable Set (20') 230V-60Hz(USA)	1	STOW3x1.25mm2 (16AWG)	LB	
2	143-000-33	Hex.Tapping Screw	2	M5x20	SUS304	
3	003-190-10	Gland	1		SUS316	
4	143-146-18	Tapping Screw (w/Plain Washer)	2	M5x20	SUS304	
5	068-000-18	Handle	1		Resin	
6	140-000-34	Hex.Bolt (w/Spring/Plain Washer)	4	M5x25(14L)	SUS304	
7	122-003-17	O-Ring	4	P-5(4.8xd1.9)	NBR	*
8	051-000-13	Motor Head Cover	1		Resin	
9	076-000-55	Capacitor 120V-60Hz(USA)	1	28MF-220VAC		interchangable with OLD part# 076-000-24
	076-000-55	Capacitor 230V-60Hz(USA)	1	28MF-220VAC		interchangable with OLD part# 076-000-24
10	143-086-22	Pan Screw (w/Spring Washer)	2	M4x8	SWRM	
11	143-000-22	Tapping Screw	1	M3x10	SWCH	
12	127-000-24	Capacitor Fixing Plate	1		SPCC	
13	143-000-21	Pan Screw	4	M4x115(30L)	SS	
14	121-001-06	Packing	1	d110.5xd115.5x4.5t	NBR	*
15	140-452-11	Hex.Bolt (w/Spring/Plain Washer)	1	M4x8	C3604	
16	009-000-47	Earth Terminal	1Set	1.25mm2x200L		
17	050-000-32	Motor Bracket	1		ADC	
18	142-388-11	Wave Washer	2	6201(D=30.6)	S65CM	
19	052-100-15	Bearing	1	6201ZZC3		
20	055-002-17	Rotor	1Set	w/Bearing		
21	052-100-15	Bearing	1	6201ZZC3		
22	056-002-22	Stator (w/M.Frame)120V-60Hz(USA)	1Set	w/Miniature Protector		
	056-002-24	Stator (w/M.Frame)230V-60Hz(USA)	1Set	w/Miniature Protector		
23	121-001-11	Packing	1	40PU2.15-52/62	NBR	*
24	060-001-18	Bearing Housing	1		ADC	
25	025-000-42	Mechanical Seal	1	D-12RC	SSIC	
26	030-000-08	Oil Lifter	1	D-12B	Resin	
27	141-029-18	Hex.Cap Nut	4	M6	SUS304	
28	029-000-42	Oil Casing	1	40PU2.15-52/62	Resin	
29	035-127-15	Oil Plug	1	M10x15	SUS304	
30	121-246-11	Packing	1	d10.3xd16x2t	PE	*
31	143-000-26	Truss Screw (w/O-Ring)	4	M6x20(P-5,NBR)	SUS304	*
32	122-131-15	O-Ring	1	G-100(99.4xd3.1)	NBR	*
33	140-436-19	Hex.Bolt (w/Plain Washer)	2	M8x55	SUS304	
34	048-274-18	Screwed Flange	1	NPT-2(P.C.90)	Resin	
35	121-469-12	Packing	1	P.C.90xd58x2t	NR	*

PARTS LIST		VANCS SEWAGE & WASTEWATER PUMP				3/1/2017
ITEM	PART No.	DESCRIPTION	QTY	SIZE	MATERIAL	NOTES
36	020-001-34	Pump Casing (Upper)	1	2-PU	Resin	
37	141-121-11	Hex.Nut	2	M8(B=12)	SUS304	
38	203-065-11	Valve	1	d17	Glass	
39	121-530-15	Packing	1	2-PU	NBR	*
40	040-139-16	Impeller Washer	1	d9.2xd17x2t	SUS304	
41	021-G43-19	Impeller (60Hz)	1	40PU2.15S-64	Resin	
41	021-G42-18	Impeller (50Hz) OPTION	1	40PU2.15S-54	Resin	50Hz OPTION
42	143-173-14	Truss Screw (w/Plain Washer)	1	M5x10	SUS304	
43	020-002-24	Pump Casing (Lower)	1	2-PU	Resin	
44	143-147-19	Pan Screw (w/Plain Washer)	2	M6x40	SUS304	
45	143-141-13	Pan Screw (w/Plain Washer)	4	M6x80	SUS304	
	173-000-76	Packing O-Ring Set	1Set	(Marked by *)		
7	122-003-17	O-Ring (Head Cover Fixing Screw)	4	P-5(4.8xd1.9)	NBR	*
14	121-001-06	Packing (Head Cover/M.Frame)	1	d110.5xd115.5x4.5t	NBR	*
23	121-001-11	Packing (M.Frame/O.Casing)	1	40PU2.15-52/62	NBR	*
30	121-246-11	Packing (Oil Plug)	1	d10.3xd16x2t	PE	*
31	122-003-17	O-Ring (P.Casing Bolt)	4	P-5(4.8xd1.9)	NBR	*
32	122-131-15	O-Ring (O.Casing/Upp. P.Casing)	1	G-100(99.4xd3.1)	NBR	*
35	121-469-12	Packing (Screwed Flange)	1	P.C.90xd58x2t	NR	*
39	121-530-15	Packing (Upp./Low. P.Casing)	1	2-PU	NBR	*
		Lubricant		Liquid Paraffin VG32 150ml		

PARTS LIST		VANCS SEWAGE & WASTEWATER PUMP				3/1/2017
ITEM	PART No.	DESCRIPTION	QTY	SIZE	MATERIAL	NOTES

EXPLODED VIEW

40PU2. 15S-54/64
50PU2. 15S-54/64



C-00707-1