

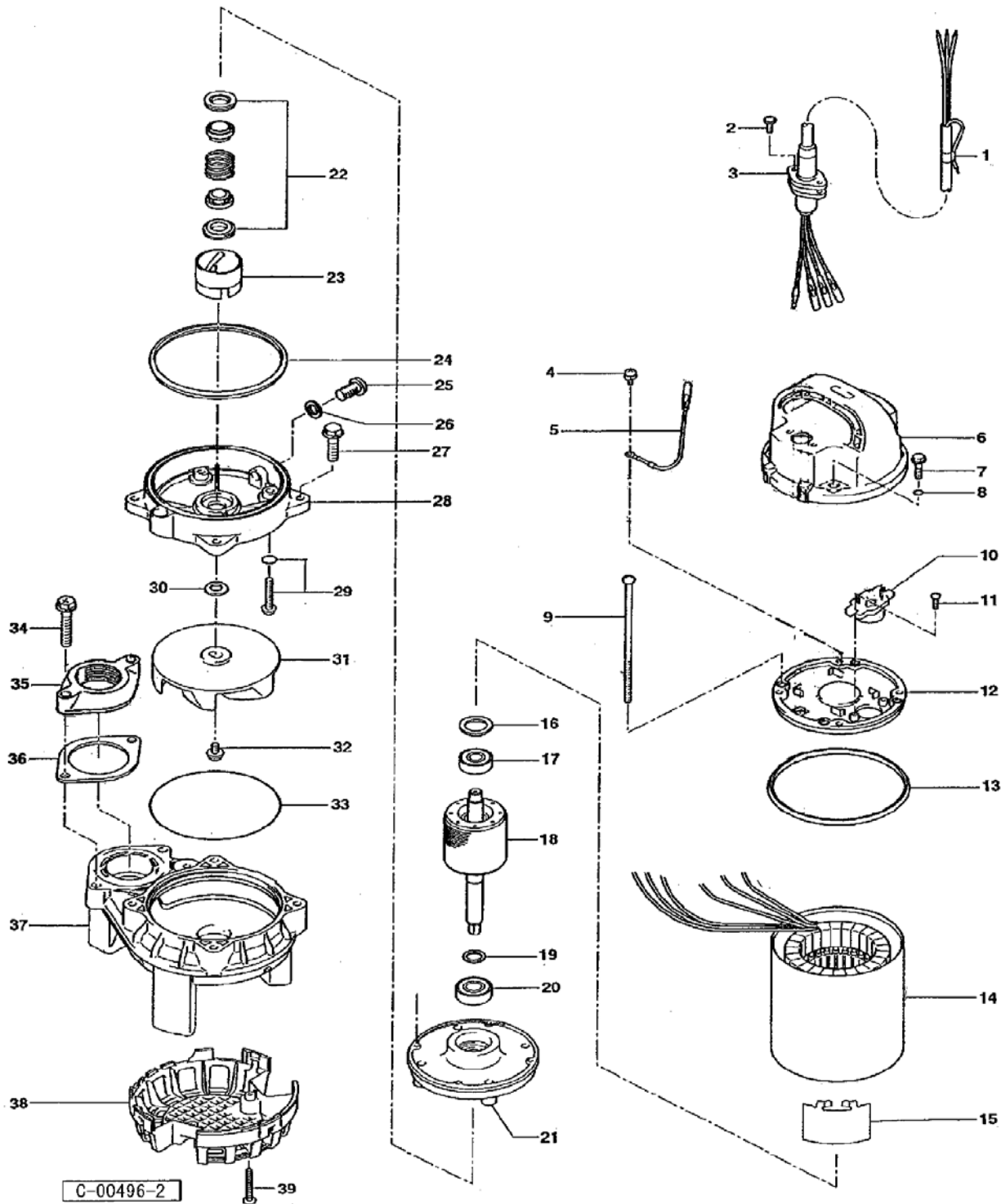
| PARTS LIST | | TITANIUM WASTEWATER PUMP | | | 2/15/2018 | |
|------------|------------|--------------------------------------|------|---------------------|-----------|-------|
| ITEM | PART No. | DESCRIPTION | QTY | SIZE | MATERIAL | NOTES |
| 1 | 001-912-36 | Cabtyre Cable Set (32') 60Hz (USA) | 1 | VCT4Cx1.25mm2 | TMT | |
| 2 | 143-000-37 | Hex.Tapping Screw | 2 | M5x20 | Titanium | |
| 3 | 003-100-26 | Gland | 1 | LB/TM | Titanium | |
| 4 | 143-085-34 | Pan Screw (w/Spring Washer) | 1 | M4x6 | C3604 | |
| 5 | 009-207-19 | Earth Terminal | 1Set | AWG16x175L(CEE) | | |
| 6 | 051-000-46 | Head Cover | 1 | | Resin | |
| 7 | 140-000-15 | Hex.Bolt (w/Plain Washer) | 4 | M6x30(22L) | Titanium | |
| 8 | 122-004-18 | O-Ring | 4 | P-6(5.8xd1.9) | NBR | * |
| 9 | 143-000-04 | Pan Screw | 4 | M5x118(20L) | SWRM | |
| 10 | 053-446-19 | Motor Protector 208/220V-60Hz(USA) | 1 | KA311-DAVL66 | (T) | |
| 10 | 053-354-19 | Motor Protector 460V-60Hz(USA) | 1 | KA311-DPVL74 | (T) | |
| 11 | 143-136-15 | Truss Screw | 2 | M4x10 | SWRM | |
| 12 | 050-000-02 | Motor Bracket | 1 | | ADC | |
| 13 | 121-471-17 | Packing | 1 | d126.6xd135.6x6t | NBR | * |
| 14 | 056-000-42 | Stator(w/M.Frame) 208/220V-60Hz(USA) | 1Set | | | |
| 14 | 056-000-83 | Stator(w/M.Frame) 460V-60Hz(USA) | 1Set | | | |
| 15 | 071-000-01 | Collar | 1 | 37L | SECC | |
| 16 | 142-192-16 | Wave Washer | 1 | 6201(D=32,t=0.4) | SK5 | |
| 17 | 052-100-15 | Bearing | 1 | 6201ZZC3 | | |
| 18 | 055-000-26 | Rotor | 1Set | w/Bearing | | |
| 19 | 061-157-15 | Bearing Collar | 1 | d15.1xd21x1.6t | SPCC | |
| 20 | 052-101-16 | Bearing | 1 | 6202ZZC3 | | |
| 21 | 060-001-37 | Bearing Housing | 1 | | ADC | |
| 22 | 025-290-19 | Mechanical Seal | 1 | W-14HL | SSiC | |
| 23 | 030-000-01 | Oil Lifter | 1 | VANCS2 | Resin | |
| 24 | 121-001-12 | Packing | 1 | VANCS2 | NBR | * |
| 25 | 035-128-16 | Oil Plug | 1 | M10x15 | Titanium | |
| 26 | 121-246-11 | Packing | 1 | d10.3xd16x2t | PE | * |
| 27 | 140-000-11 | Hex.Bolt (w/Plain Washer) | 4 | M6x25 | Titanium | |
| 28 | 029-000-95 | Oil Casing | 1 | VANCS2 | Resin | |
| 29 | 143-000-08 | Truss Screw (w/O-Ring) | 4 | M6x20(P-5,NBR) | Titanium | |
| 30 | 142-360-17 | Impeller Fixing Washer | 1 | d11.2xd22.5x0.8t | Titanium | |
| 31 | 021G2629 | Impeller (60Hz) | 1 | 50TM2.4-62 | Resin | |
| 32 | 143-140-25 | Truss Screw (w/Plain Washer) | 1 | M6x12 | Titanium | |
| 33 | 122-000-07 | O-Ring | 1 | 122xd3.0 | NBR | * |
| 34 | 140-000-12 | Hex.Bolt (w/Plain Washer) | 2 | M8x45 | Titanium | |
| 35 | 048-274-18 | Screwed Flange | 1 | NPT-2(P.C.90) | Resin | |
| 36 | 121-469-12 | Packing | 1 | P.C.90xd58x2t | NR | * |
| 37 | 020-000-07 | Pump Casing | 1 | (40/50)TM.25/.4/.75 | Resin | |

| PARTS LIST | | TITANIUM WASTEWATER PUMP | | | | 2/15/2018 |
|------------|------------|---------------------------------|------|--------------------------------|----------|-----------|
| ITEM | PART No. | DESCRIPTION | QTY | SIZE | MATERIAL | NOTES |
| 38 | 023-000-01 | Strainer | 1 | (40/50)PN/TM/TQ2. 25/.4/.75 | Resin | |
| 39 | 143-000-11 | Truss Tapping Screw | 2 | M4x18 | Titanium | |
| | 173-000-07 | Packing O-Ring Set | 1Set | (Marked by *) | | |
| 8 | 122-004-18 | O-Ring (Head Cover Fixing Bolt) | 4 | P-6(5.8xd1.9) | NBR | * |
| 13 | 121-471-17 | Packing (Head Cover/M.Frame) | 1 | d126.6xd135.6x6t | NBR | * |
| 24 | 121-001-12 | Packing (M.Frame/O.Casing) | 1 | VANCS2 | NBR | * |
| 26 | 121-246-11 | Packing (Oil Plug) | 1 | d10.3xd16x2t | PE | * |
| 29 | 122-003-17 | O-Ring (P.Casing Fixing Screw) | 4 | P-5(4.8xd1.9) | NBR | * |
| 33 | 122-000-07 | O-Ring (O.Casing/P.Casing) | 1 | 122xd3.0 | NBR | * |
| 36 | 121-469-12 | Packing (Screwed Flange) | 1 | P.C.90xd58x2t | NR | * |
| | | Lubricant | | Liquid Paraffin VG32 240ml | | |

| PARTS LIST | | TITANIUM WASTEWATER PUMP | | | 2/15/2018 | |
|------------|----------|--------------------------|-----|------|-----------|-------|
| ITEM | PART No. | DESCRIPTION | QTY | SIZE | MATERIAL | NOTES |

EXPLODED VIEW

50TM2. 25-53/63 50TM2. 25-52/62
 50TM2. 4-53/63 50TM2. 4-52/62
 50TM2. 75-53/63 50TM2. 75-52/62



C-00496-2