

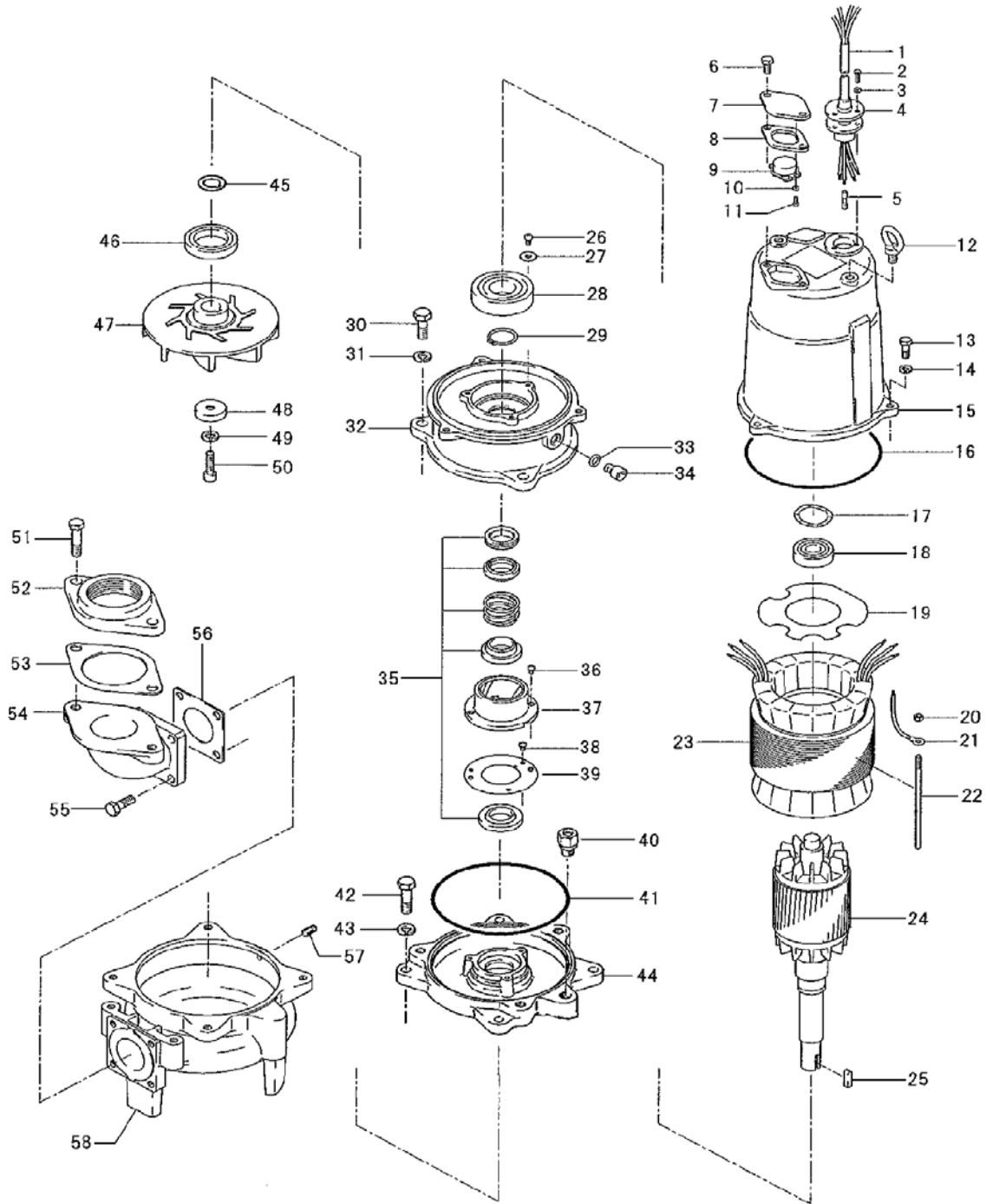
PARTS LIST		SEWAGE & WASTEWATER PUMP			4/9/2018	
ITEM	PART No.	DESCRIPTION	QTY	SIZE	MATERIAL	NOTES
1	001-148-33	Cabtyre Cable Set	1	16AWG 4C	PVC	
2	140-021-17	Hex.Bolt	3	M5x20	SUS304	
3	142-422-18	Seal Washer	3	PM-5	SUS+NBR	
4	003-111-20	Gland	1		SUS304	
5	009-119-13	Terminal	4	CE-2	CU	
6	140-052-17	Hex.Bolt	2	M8x16	SUS304	
7	127-107-17	Protector Fixing Plate	1	22/37-BE2	SUS304	replaces OLD part# 127-195-12
8	121-446-13	Packing	1	22/37-BE2	NBR	*
9	053-240-11	Motor Protector 208/230V-60Hz(USA)	1	KA313-GGXL103	(T.C)	
	053-421-18	Motor Protector 460V-60Hz(USA)	1	KA313-GQXL102	(T.C)	
10	142-111-24	Plain Washer	2	M4(D=8)	SPC	
11	143-015-17	Pan Screw	2	M4x10	SWRM	
12	072-100-20	Eye Bolt	2	M10	SUS304	
13	140-055-10	Hex.Bolt	3	M8x25	SUS304	
14	142-163-18	Spring Washer	3	M8	SUS304	
15	064-509-15	Motor Frame	1		FC	
16	122-333-19	O-Ring	1	170xd3.1	NBR	*
17	142-196-10	Wave Washer	1	6205/6304	SK5	
18	052-188-17	Bearing (w/O-ring)	1	AC-6304ZZC3		
19	058-000-46	Lead Wire Protection Plate	1	d70xd140x1.6t	Bakelite	replaces OLD item# 058-117-13
20	141-004-59	Hex.Nut	1	M6	SWRM	
21	009-159-15	Terminal	1	R-2-6	CU	
22	129-004-19	Stopper	1	M6x160(20/66)	SS	
23		Stator	1Set			
24	055-790-17	Rotor	1Set			
25	147-081-16	Impeller Key	1	7x7x22l	SUS420	
26	143-042-13	Pan Screw	3	M6x10	SWRM	
27	062-196-19	Bearing Fixing Washer	3	d8xd20.5x2.3t	SS	
28	052-1101-8	Bearing	1	6307ZZC3		
29	146-022-16	Retaining Ring	1	C35	SK5	
30	140-098-15	Hex.Bolt	3	M12x35	SUS304	
31	142-165-10	Spring Washer	3	M12	SUS304	
32	060-373-16	Bearing Housing	1		FC	
33	121-247-12	Packing	1	d12.3xd18x2t	PE	*
34	035-113-18	Oil Plug	1	M12x14	SUS304	
35	025-194-12	Mechanical Seal	1	H-30	SiC+CCBN	
36	143-070-23	Pan Screw	2	M5x6	SWRM	
37	030-142-11	Oil Lifter	1	H-30(A)(T)	Resin	

PARTS LIST		SEWAGE & WASTEWATER PUMP				4/9/2018
ITEM	PART No.	DESCRIPTION	QTY	SIZE	MATERIAL	NOTES
38	143-070-10	Pan Screw	3	M5x6	SWRM	
39	030-151-13	Seal Stopper	1	H-30(A)(T)	SPCC	
40	046-000-03	Air Release Valve	1	PT-1/2	SUS304	
41	122-246-14	O-Ring	1	180xd3.1	NBR	*
42	140-078-19	Hex.Bolt	4	M10x35	SUS304	
43	142-164-19	Spring Washer	4	M10	SUS304	
44	029-379-28	Oil Casing	1	50US41.5	FC	
45		Impeller Shim	1		SUS304	
46	026-111-18	Oil Seal	1	TC-456812	NBR	
47	021-P30-10	Impeller (60Hz)	1	50UZ41.5-61	FC	
48	142-301-10	Impeller Washer	1	M10	SUS304	
49	142-000-21	Spring Washer	1	M10	SUS304	
50	140-284-10	Hex.Socket Cap Bolt	1	M10x20	SUS304	
51	140-099-16	Hex.Bolt	2	M12x40	SUS304	included in BEND 2"NPT
52	048-136-17	Screwed Flange (2")	1	NPT-2(P.C.140)	FC	included in BEND 2"NPT
53	121-137-18	Packing	1	MBT(P.C.140)	NBR	included in BEND 2"NPT
54	037-117-18	Discharge Bend	1	50mm(122-16)	FC	included in BEND 2"NPT
55	140-078-19	Hex.Bolt	4	M10x35	SUS304	included in BEND 2"NPT
56	121-142-16	Packing	1	90mm2(P.C.98)	NBR	included in BEND 2"NPT
57	204-045-18	Plug	1	PT-1/8	SUS304	
58	020-B09-28	Pump Casing	1	50US41.5	FC	
	173-000-04	Packing O-Ring Set	1Set	(Marked by *)		
8	121-446-13	Packing (Protector Fixing Plate)	1	22/37-BE2	NBR	*
16	122-333-19	O-Ring (M.Frame/Brg.Housing)	1	170xd3.1	NBR	*
33	121-247-12	Packing (Oil Plug)	1	d12.3xd18x2t	PE	*
40	122-246-14	O-Ring (Brg.Housing/O.Casing)	1	180xd3.1	NBR	*
53	121-142-16	Packing (Discharge Bend)	1	90mm2(P.C.98)	NBR	*
50	121-137-18	Packing (Screwed Flange)	1	MBT(P.C.140)	NBR	*
		Lubricant		Turbine Oil VG32 1,250ml		

PARTS LIST		SEWAGE & WASTEWATER PUMP			4/9/2018	
ITEM	PART No.	DESCRIPTION	QTY	SIZE	MATERIAL	NOTES

EXPLODED VIEW

50UZ41.5-51/61 (50US41.5-50/60)



C-00309-1