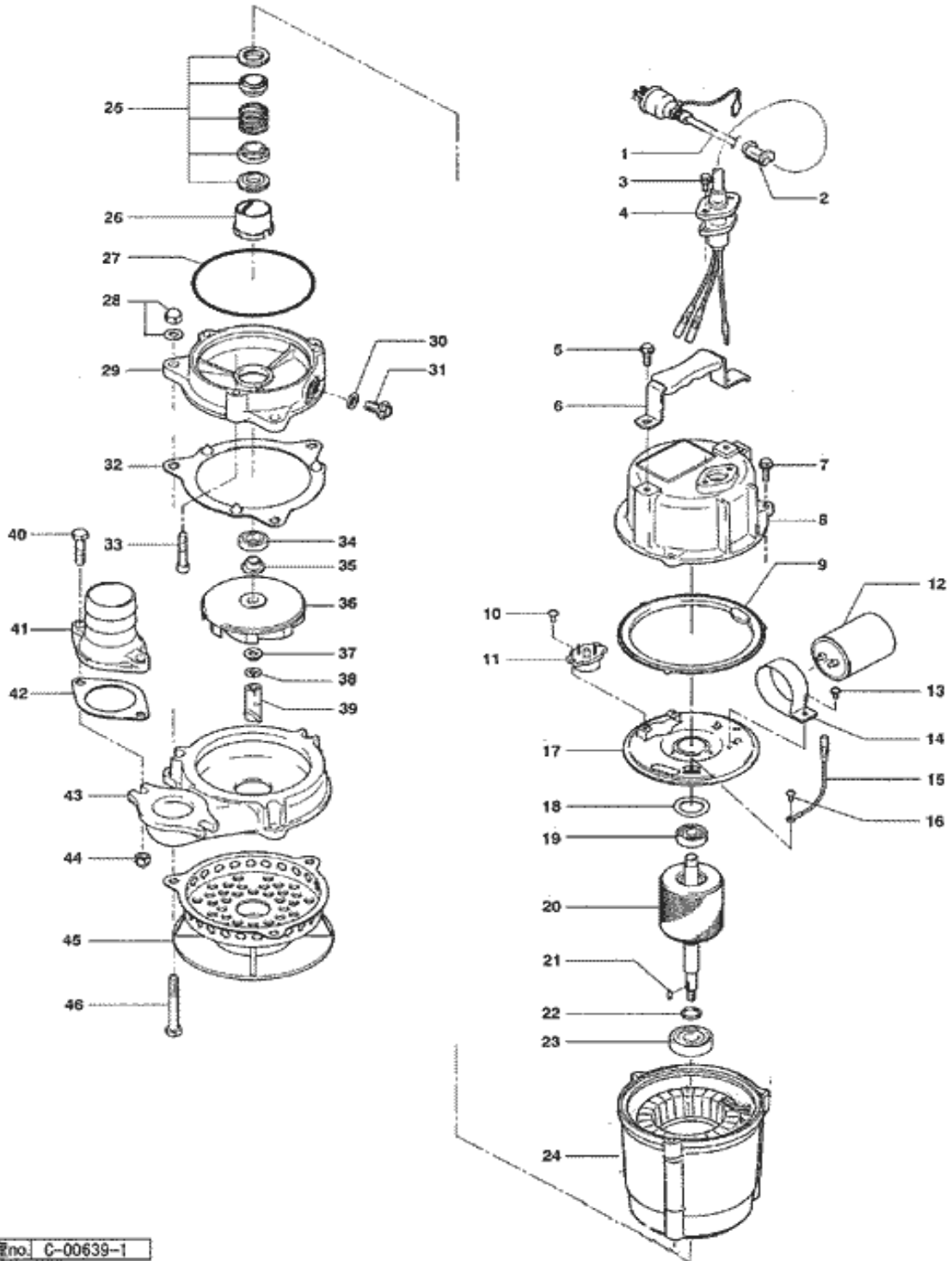


PARTS LIST		CONTRACTOR PUMPS				Date: 6/11/2012
ITEM	PART No.	DESCRIPTION	QTY	SIZE	MATERIAL	NOTES

## EXPLODED VIEW HSD2.55S-52/62



管理no. C-00639-1

PARTS LIST		CONTRACTOR PUMPS			Date: 6/11/2012	
ITEM	PART No.	DESCRIPTION	QTY	SIZE	MATERIAL	NOTES
1	001-943-23	Cabtyre Cable Set (10m)115V-60Hz(USA)	1	STOW3x1.25mm2(CSA)	LB	
2	010-134-18	Cable Clip Rubber	1	HS3-4	NBR	
3	140-427-17	Hex.Bolt (w/Plain Washer)	2	M5x15	SUS304	
4	003-190-10	Gland	1		SUS316	
5	140-451-10	Hex.Bolt (w/Plain Washer)	2	M6x16	SUS304	
6	068-224-15	Handle	1	FM24-4	SPC+NR	
7	140-396-16	Hex.Bolt (w/Plain Washer)	3	M6x20	SUS304	
8	051-000-21	Motor Head Cover	1		ADC	
9	121-000-72	Packing	1	d121xd140x2.8t	NBR	
10	143-127-13	Pan Screw (w/Spring Washer/Plain Washer)	2	M4x8	SWRM	
11	053-000-63	Motor Protector 115V-60Hz(USA)	1	KA142-BBTL21F	(T.C)	
12	076-000-39	Capacitor	1	55MF-250VAC(d50x80L)		
13	143-086-22	Pan Screw (w/Spring Washer)	1	M4x8	SWRM	
14	127-000-34	Capacitor Fixing Plate	1	d50	SPC	
15	009-000-72	Earth Terminal	1Set	AWG16x150L		
16	140-000-44	Hex.Bolt	1	M4x8	SWRM	
17	050-000-48	Motor Bracket	1		ADC	
18	142-192-16	Wave Washer	1	6201(D=32,t=0.4)	SK5	
19	052-100-15	Bearing	1	6201ZZC3		
20	055-001-77	Rotor	1Set	w/Bearing		interchangeable with OLD# 055-00127
21	147-016-10	Impeller Key	1	4x4x10l	SUS403	
22	061-175-19	Bearing Collar	1	d15xd23x1.6t	SPC	
23	052-152-12	Bearing	1	6302ZZC3		
24	056-004-01	Stator (w/M.Frame)115V-60Hz(USA)	1Set			
25	025-291-10	Mechanical Seal	1	W-14VL	SIC+CCBN	
26	030-000-09	Oil Lifter	1	W-14VL	Resin	
27	122-133-17	O-Ring	1	G-110(109.4xd3.1)	NBR	
28	141-144-10	Hex.Nut (w/Flange)	3	M8	SUS304	
29	029-000-58	Oil Casing	1	HS2.4(S)-52/62	FC	
30	121-246-11	Packing	1	d10.3xd16x2t	PE	
31	035-125-13	Oil Plug	1	M10x20(B=13)	SUS304	
32	121-000-20	Packing	1	HS-4E	NR	
33	140-256-13	Hex.Socket Cap Bolt	3	M6x35	SUS304	
34	122-441-11	V-Ring	1	VR-14	NBR	
35	071-292-14	Shaft Sleeve	1	LB3-250/480	SUS304	
36	021-001-34	Impeller (60Hz)	1	HSD2.55S-62	HiCrFC	
37	142-127-10	Plain Washer	1	M8	SUS304	
38	142-163-18	Spring Washer	1	M8	SUS304	
39	024-000-02	Stirrer	1	M8x40	HiCrFC	
40	140-057-12	Hex.Bolt	2	M8x35	SUS304	
41	032-289-17	Hose Coupling 115V-60Hz(USA)	1	HS2-4(NPT-2)	FC	
42	121-138-19	Packing	1	LB(P.C.84)	NBR	
43	020-000-40	Pump Casing	1	HS2.4(S)-51/61	FCD	
44	141-144-10	Hex.Nut (w/Flange)	2	M8	SUS304	

