

| PARTS LIST | | HI-HEAD DEWATERING PUMP | | | 6/7/2018 | |
|------------|------------|--|------|---------------------|----------|---------------------------------|
| ITEM | PART No. | DESCRIPTION | QTY | SIZE | MATERIAL | NOTES |
| 1 | 140-101-12 | Hex.Bolt | 6 | M12x50 | SUS304 | |
| 2 | 142-165-10 | Spring Washer | 6 | M12 | SUS304 | |
| 3 | 070-117-11 | L-Shape Fitting | 1 | 40x25x4.5t d13Hole | SPC | |
| 4 | 068-000-32 | Handle | 1 | SM1-2-11-KTZ | SGP+SS | |
| 5 | 001-844-36 | Cabtyre Cable Set (50') 60Hz (USA) | 1 | 4Cx8AWGx50' | GHZ | |
| 6 | 010-122-10 | Cable Clip Rubber | 1 | No.2 | NBR | |
| 7 | 010-120-18 | Cable Clip | 1 | No.2-1 | SPC | |
| 8 | 141-004-59 | Hex.Nut | 1 | M6 | SWRM | |
| 9 | 140-032-37 | Hex.Bolt | 1 | M6x15 | SWRM | |
| 10 | 095-131-18 | Chain | 1 | 4mm(3L) | SS | |
| 11 | 011-101-19 | Shackle | 1 | 6mm(M8,SC) | SS | |
| 12 | 140-076-17 | Hex.Bolt | 2 | M10x30 | SUS304 | included in item #5 Cable Ass'y |
| 13 | 003-183-23 | Gland | 1 | GHZ-311W | FC | included in item #5 Cable Ass'y |
| 14 | 002-103-26 | Cable Protection Tube | 1 | No.3 | NR | included in item #5 Cable Ass'y |
| 15 | 005-122-17 | Bush Washer | 2 | d23xd53.5x3.2t | SPC | included in item #5 Cable Ass'y |
| 16 | 004-129-11 | Cable Bush | 1 | d22.5xd54x25l | NBR | included in item #5 Cable Ass'y |
| 17 | 140-055-10 | Hex.Bolt | 4 | M8x25 | SUS304 | |
| 18 | 006-160-10 | Stuffing Box | 1 | GHZ-311W | FC | included in item #5 Cable Ass'y |
| 19 | 122-128-19 | O-Ring | 1 | G-85(84.4xd3.1) | NBR | * |
| 20 | 009-129-16 | Terminal | 4 | E (Small) | CU | included in item #5 Cable Ass'y |
| 21 | 009-101-12 | Terminal(C/W Screw) | 4 | d12x(d6.6xd6.6)x25l | C3604 | |
| 22 | 009-129-16 | Terminal | 4 | E (Small) | CU | |
| 23 | 002-135-14 | Heat Shrink Tube (40°) | m | A(d15x0.3t) | (Vm) | |
| 24 | 002-132-11 | Heat Shrink Tube (40°) | m | A4(d17x0.27t) | (Vm) | |
| 25 | 140-099-16 | Hex.Bolt | 4 | M12x40 | SUS304 | |
| 26 | 142-129-25 | Plain Washer | 4 | M12 | SPC | |
| 27 | 032-001-00 | Hose Coupling 4" NPT | 1 | NPT-4", Angle | FC | |
| 27 | 032-001-03 | Hose Coupling 6" NPT | 1 | NPT-6", Angle | FC | option |
| 28 | 121-001-49 | Packing | 1 | KTZ-11kW(Angle) | NBR | * |
| 29 | 143-164-25 | Pan Screw (w/Spring Washer) | 1 | M6x8 | C3604 | |
| 30 | 009-296-15 | Earth Terminal | 1Set | 8mm2x180L | | |
| 31 | 050-001-13 | Motor Bracket | 1 | | FC | |
| 32 | 122-173-19 | O-Ring | 1 | V-225(222.5xd6) | NBR | * |
| 33 | 053-000-04 | Motor Protector 208230V-60Hz | 1 | KA315-JTXL00 | (B.C) | |
| 33 | 053-000-24 | Motor Protector 460V-60Hz | 1 | KA315-JKZL00 | (B.C) | |
| 33 | 053-000-25 | Motor Protector 575V | 1 | KA315-JKVL00 | (B.C) | |
| 34 | 143-125-24 | Pan Screw (w/Spring Washer/Plain Washer) | 2 | M4x14 | SWRM | |
| 35 | 142-198-12 | Wave Washer | 1 | 6306 | SK5 | |
| 36 | 052-109-14 | Bearing | 1 | 6306ZZC3 | | |
| 37 | 122-245-13 | O-Ring | 1 | 71.4xd3.1 | NBR | * |
| 38 | 058-000-36 | Lead Wire Protection Plate | 1 | d96xd224.5x1.6t | PE | |
| 39 | 055-002-61 | Rotor | 1Set | | | |

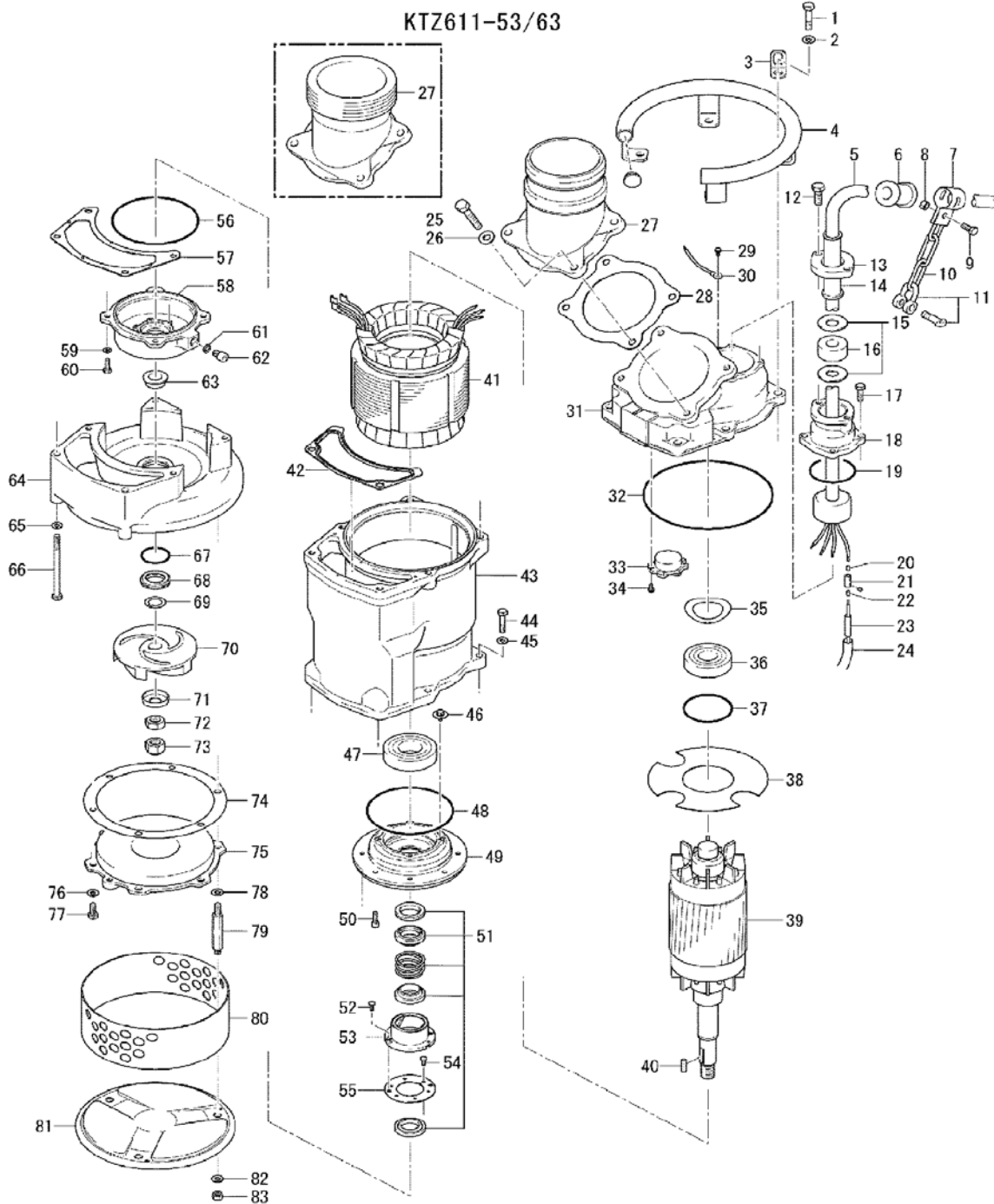
| PARTS LIST | | HI-HEAD DEWATERING PUMP | | | 6/7/2018 | |
|------------|------------|---|------|------------------|----------|-----------------------|
| ITEM | PART No. | DESCRIPTION | QTY | SIZE | MATERIAL | NOTES |
| 40 | 147-139-10 | Impeller Key | 1 | 7x7x28l | SUS420 | |
| 41 | 056-007-27 | Stator 208230V-60Hz | 1Set | | | |
| 41 | 056-007-37 | Stator 460V-60Hz | 1Set | | | |
| 41 | 056-007-39 | Stator 575V | 1Set | | | |
| 42 | 121-504-10 | Packing (Water Way, Upp.) | 1 | KTZ411/611 | NBR | * |
| 43 | 064-001-32 | Motor Frame | 1 | | FC | |
| 44 | 140-080-14 | Hex.Bolt | 4 | M10x45 | SUS304 | |
| 45 | 142-164-19 | Spring Washer | 4 | M10 | SUS304 | |
| 46 | 140-000-06 | Hex.Bolt (w/Spring Washer/Plain Washer) | 4 | M6x12 | SWCH | |
| 47 | 052-112-10 | Bearing | 1 | 6309ZZC3 | | |
| 48 | 122-285-15 | O-Ring | 1 | 155xd3.1 | NBR | * |
| 49 | 060-001-39 | Bearing Housing | 1 | | FC | |
| 50 | 140-269-19 | Hex.Socket Cap Bolt | 4 | M8x25 | SUS304 | |
| 51 | 025-000-73 | Mechanical Seal | 1 | H-30T(T) RoHS | SIC | supercedes 025-000-50 |
| 52 | 143-070-23 | Pan Screw | 2 | M5x6 | SWRM | |
| 53 | 030-142-11 | Oil Lifter | 1 | H-30(A)(T) | Resin | |
| 54 | 143-070-10 | Pan Screw | 6 | M5x6 | SWRM | |
| 55 | 030-147-16 | Seal Stopper | 1 | HT-3035 | SPCC | |
| 56 | 122-285-15 | O-Ring | 1 | 155xd3.1 | NBR | * |
| 57 | 121-503-19 | Packing (Water Way, Low.) | 1 | KTZ411/611 | NBR | * |
| 58 | 029-333-17 | Oil Casing | 1 | KTZ47.5/611 | FC | |
| 59 | 142-163-18 | Spring Washer | 4 | M8 | SUS304 | |
| 60 | 140-055-10 | Hex.Bolt | 4 | M8x25 | SUS304 | |
| 61 | 121-247-12 | Packing | 1 | d12.3xd18x2t | PE | * |
| 62 | 035-113-18 | Oil Plug | 1 | M12x14 | SUS304 | |
| 63 | 071-198-19 | Shaft Sleeve | 1 | d25xd35x17l | SUS403 | |
| 64 | 020-001-06 | Pump Casing | 1 | KTZ411/611 | FC | |
| 65 | 142-164-19 | Spring Washer | 2 | M10 | SUS304 | |
| 66 | 140-449-15 | Hex.Bolt | 2 | M10x140 | SUS304 | |
| 67 | 122-360-15 | O-Ring | 1 | 46.5xd2.5 | NBR | * |
| 68 | 026-238-12 | Labyrinth Ring | 1 | GHV/GHZ-7.5/11KW | SUS304 | |
| 69 | 040-107-28 | Impeller Shim | | d25.2xd38x0.3t | SUS304 | |
| 70 | 021-K84-15 | Impeller (50Hz) OPTION | 1 | KTZ611-53 | HiCrFC | 50Hz OPTION |
| 70 | 02-1K85-16 | Impeller (60Hz) | 1 | KTZ611-63 | HiCrFC | |
| 71 | 047-105-14 | Impeller Thread Protect.Cover | 1 | No.4(22) | SPC | |
| 72 | 141-009-38 | Hex.Nut | 1 | M20(H=12) | SUS304 | |
| 73 | 141-034-16 | Hex.Cap Nut | 1 | M20 | SUS304 | |
| 74 | 120-111-13 | Packing (S.Cover) | | d221xd268x0.3t | PE | |
| 75 | 022-000-57 | Suction Cover | 1 | KTZ67.5/611 | FCD | |
| 76 | 142-128-24 | Plain Washer | 3 | M10 | SPC | |
| 77 | 140-075-16 | Hex.Bolt | 3 | M10x25 | SUS304 | |

| PARTS LIST | | HI-HEAD DEWATERING PUMP | | | 6/7/2018 | |
|------------|------------|-------------------------------|------|------------------------|----------|--------------------------------|
| ITEM | PART No. | DESCRIPTION | QTY | SIZE | MATERIAL | NOTES |
| 78 | 142-128-24 | Plain Washer | 3 | M10 | SPC | |
| 79 | 144-000-57 | Stud Bolt | 3 | M10x124(26/14) | SUS403 | supercedes 144-119-15 (SUS403) |
| 80 | 023-252-13 | Strainer | 1 | KTV-75/110 | SPCC | |
| 81 | 049-133-20 | Bottom Plate | 1 | KRS-C3/A3 | SPC | |
| 82 | 142-128-24 | Plain Washer | 3 | M10 | SPC | |
| 83 | 141-006-77 | Hex.Nut | 3 | M10 | S45C | |
| | 173-000-86 | Packing O-Ring Set | 1Set | (Marked by *) | | |
| 19 | 122-128-19 | O-Ring (S.Box) | 1 | G-85(84.4xd3.1) | NBR | * |
| 28 | 121-001-49 | Packing (Hose Coupling) | 1 | KTZ-11kW(Angle) | NBR | * |
| 32 | 122-173-19 | O-Ring (M.Bracket/M.Frame) | 1 | V-225(222.5xd6) | NBR | * |
| 37 | 122-245-13 | O-Ring (Upp. Bearing) | 1 | 71.4xd3.1 | NBR | * |
| 42 | 121-504-10 | Packing (Water Way, Upp.) | 1 | KTZ411/611 | NBR | * |
| 48 | 122-285-15 | O-Ring (M.Frame/Brg.Housing) | 1 | 155xd3.1 | NBR | * |
| 56 | 122-285-15 | O-Ring (Brg.Housing/O.Casing) | 1 | 155xd3.1 | NBR | * |
| 57 | 121-503-19 | Packing (Water Way, Low.) | 1 | KTZ411/611 | NBR | * |
| 61 | 121-247-12 | Packing (Oil Plug) | 1 | d12.3xd18x2t | PE | * |
| 67 | 122-360-15 | O-Ring (Labyrinth Ring) | 1 | 46.5xd2.5 | NBR | * |
| | | Lubricant | | Turbine Oil VG32 760ml | | |
| | 183-009-12 | Impeller Puller | 1 | A No.4 1"1/4" | FC | |

| PARTS LIST | | HI-HEAD DEWATERING PUMP | | | 6/7/2018 | |
|------------|----------|-------------------------|-----|------|----------|-------|
| ITEM | PART No. | DESCRIPTION | QTY | SIZE | MATERIAL | NOTES |

EXPLODED VIEW

KTZ611-53/63



C-01586-1