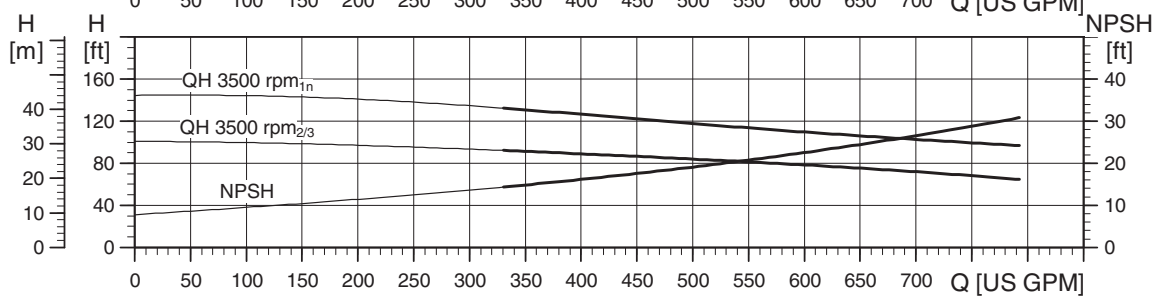
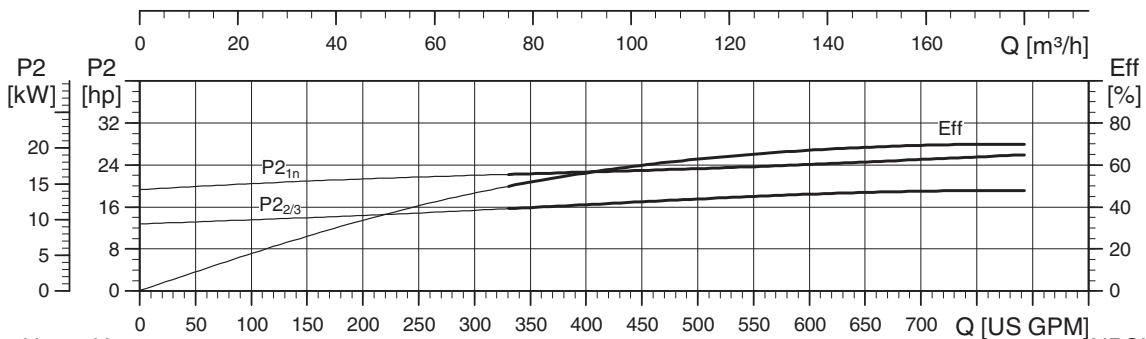
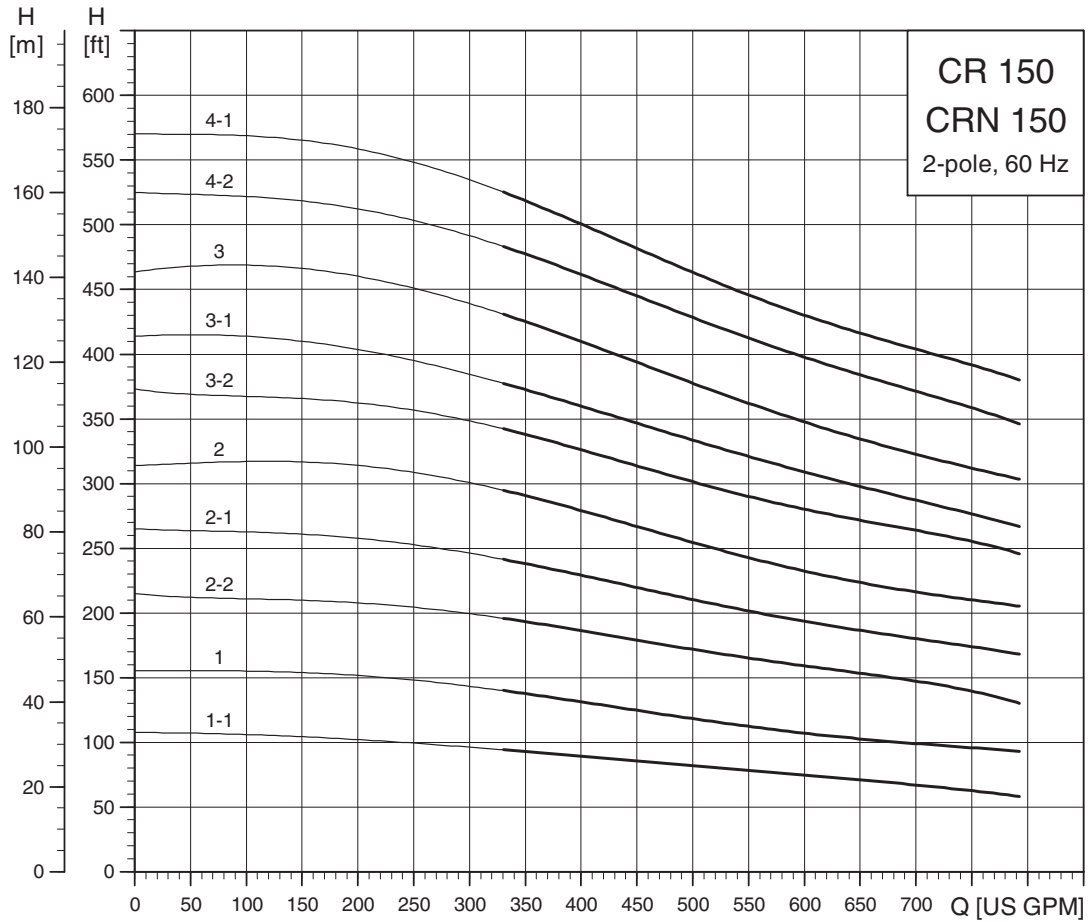
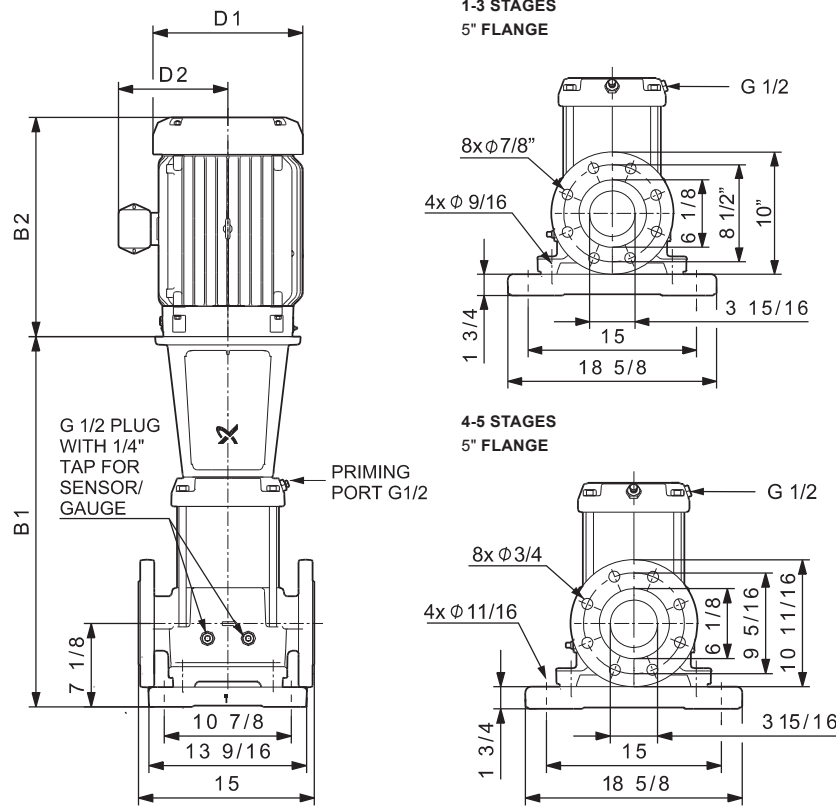


CR, CRN 150



TM03 9193 0209



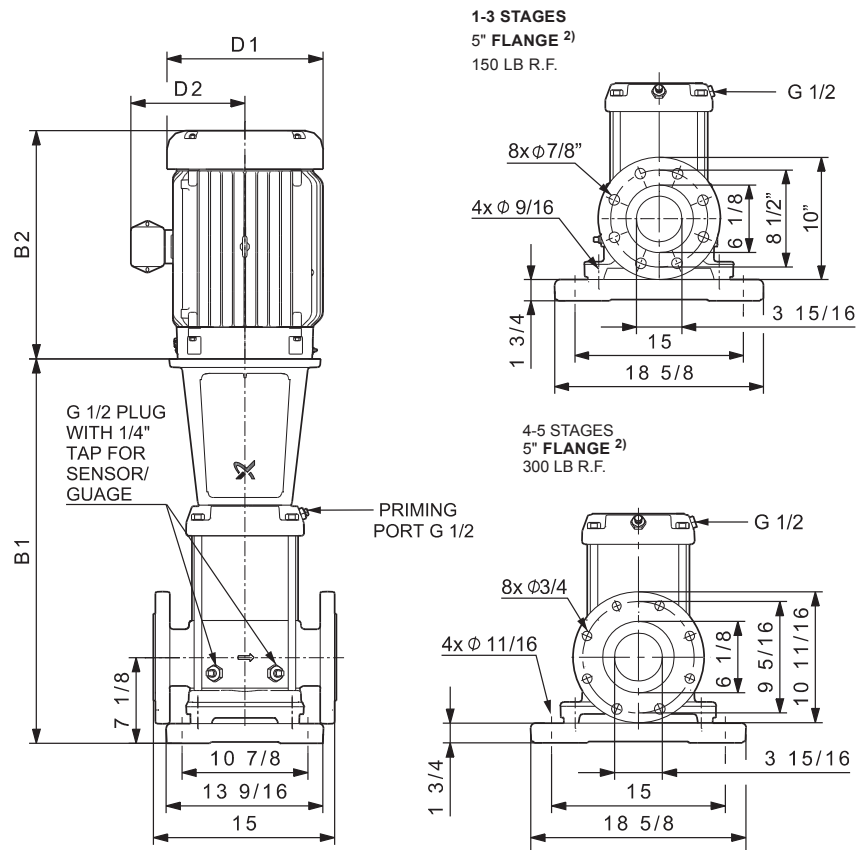
TM04 9632 4810

Pump type	P2 [hp]	Ph.	Dimensions [inch]									Dimensions [inch]			
			B1	TEFC			ODP			Ship Wt. ¹⁾ [lbs.]	MLE			Ship Wt. [lbs.]	
				D1	D2	B1+B2	D1	D2	B1+B2		D1	D2	B1+B2		
CR(E) 150-1-1	25	3	32.83	12.94	11.52	52.65	11.50	8.94	53.64	507	13.39	12.13	55.55	561	
CR(E) 150-1	30	3	32.83	15.32	13.11	56.02	11.50	8.94	54.64	669	13.39	12.13	55.55	587	
CR 150-2-2	40	3	38.98	15.32	13.11	62.17	13.25	12.21	62.23	705	-	-	-	-	
CR 150-2-1	50	3	38.98	16.88	14.12	66.79	13.25	12.21	61.73	735	-	-	-	-	
CR 150-2	60	3	38.98	19.00	14.90	69.77	15.12	13.19	65.11	915	-	-	-	-	
CR 150-3-2	75	3	45.55	19.00	14.90	76.34	15.18	13.19	71.68	1178	-	-	-	-	
CR 150-3-1	75	3	45.55	19.00	14.90	76.34	15.18	13.19	71.68	1178	-	-	-	-	
CR 150-3	100	3	45.55	19.00	17.38	76.37	15.12	13.19	72.93	1215	-	-	-	-	
CR 150-4-2	100	3	51.69	19.00	17.38	82.51	15.12	13.19	79.07	1234	-	-	-	-	
CR 150-4-1	100	3	51.69	19.00	17.38	82.51	15.12	13.19	79.07	1234	-	-	-	-	

¹⁾ Weights are based on pump with TEFC motor (see price list for individual weights).

²⁾ CR 5" flange is not manufactured to ANSI specification. Gasket contact surface is approximately 0.25". CR 6" ANSI flange adapter is manufactured to ANSI B16.5 specification.

All dimensions in inches unless otherwise noted.



TM04 9633 4810

Pump type	P2 [hp]	Ph.	Dimensions [inch]									Dimensions [inch]			
			B1	TEFC			ODP			Ship Wt. ¹⁾ [lbs.]	MLE			Ship Wt. [lbs.]	
				D1	D2	B1+B2	D1	D2	B1+B2		D1	D2	B1+B2		
CRN(E) 150-1-1	25	3	32.83	12.94	11.52	52.65	11.50	8.94	53.64	514	13.39	12.13	55.55	568	
CRN(E) 150-1	30	3	32.83	15.32	13.11	56.02	11.50	8.94	54.64	675	13.39	12.13	55.55	594	
CRN 150-2-2	40	3	38.98	15.32	13.11	62.17	13.25	12.21	62.23	711	-	-	-	-	
CRN 150-2-1	50	3	38.98	16.88	14.12	66.79	13.25	12.21	61.73	741	-	-	-	-	
CRN 150-2	60	3	38.98	19.00	14.90	69.77	15.12	13.19	65.11	922	-	-	-	-	
CRN 150-3-2	75	3	45.55	19.00	14.90	76.34	15.18	13.19	71.68	1184	-	-	-	-	
CRN 150-3-1	75	3	45.55	19.00	14.90	76.34	15.18	13.19	71.68	1184	-	-	-	-	
CRN 150-3	100	3	45.55	19.00	17.38	76.37	15.12	27.38	72.93	1222	-	-	-	-	
CRN 150-4-2	100	3	51.69	19.00	17.38	82.51	15.12	27.38	79.07	1243	-	-	-	-	
CRN 150-4-1	100	3	51.69	19.00	17.38	82.51	15.12	27.38	79.07	1243	-	-	-	-	

¹⁾ Weights are based on pump with TEFC motor (see price list for individual weights).

²⁾ CR 5" flange is not manufactured to ANSI specification. Gasket contact surface is approximately 0.25". CR 6" ANSI flange adapter is manufactured to ANSI B16.5 specification.

All dimensions in inches unless otherwise noted.